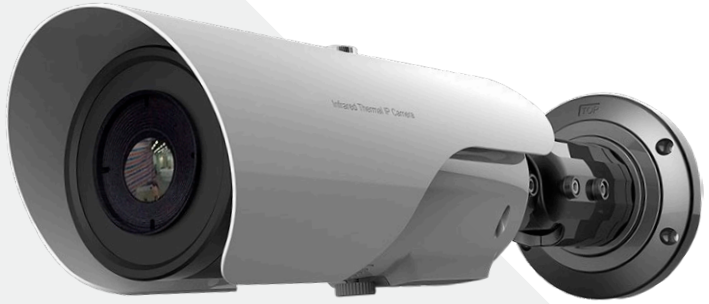


Concept Pro



4
Colour
Modes

DVE

POE

IP66

VCP-42 THERMAL RANGE

CONCEPT PRO IP THERMAL CAMERA RANGE

Concept Pro Thermal Range is great for long range video surveillance and monitoring multiple areas for temperature detection, supporting 17 display modes to highlight temperatures within the scene. Make use of the area temperature detection function where 20 individual areas can be set to detect and alarm based on exceeding a temperature or temperature differences. Making use of thermal detection at night or dark locations provides an alternative to hard to monitor areas where lighting is limited with thermal sensitivity of 40mK. The range of camera also supports 2 alarm inputs and outputs, audio and temperature display.

KEY FEATURES

- ◆ Supports up to 16 Temperature Detection areas
- ◆ Supports DVE image enhancement features
- ◆ Uncooled IRFPA Microbolometer
- ◆ Audio Input & Audio Output (x1/x1)
- ◆ Supports Local MicroSD Storage
- ◆ Three-axis rotation bracket adjustable for easy installation adjustment
- ◆ Sensitivity 40mK
- ◆ Up to 17 colour modes

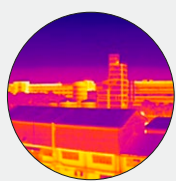
LENS & DISTANCE OPTIONS

- ◆ VCP-4250-IP - **50mm Lens** - 1410m Person | 1470m Fire | 3380m Vehicle
- ◆ VCP-4235-IP - **35mm Lens** - 990m Person | 1030m Fire | 2370m Vehicle
- ◆ VCP-4225-IP - **25mm Lens** - 700m Person | 735m Fire | 1690m Vehicle
- ◆ VCP-4215-IP - **15mm Lens** - 420m Person | 440m Fire | 1010m Vehicle
- ◆ VCP-4208-IP - **8mm Lens** - 220m Person | 235m Fire | 540m Vehicle



Onvif Compliant

This CCTV camera conforms to the ONVIF Core Specification that aims to standardise the network interface between all IP Security Products.



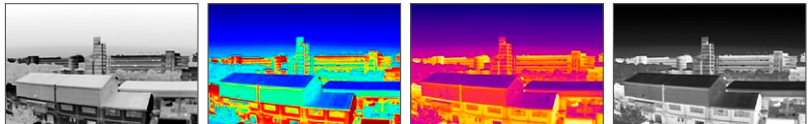
Infrared Thermal Imaging

Without any available light source the Thermal Imaging Camera will detect infrared radiation in any weather condition to produce high definition crisp images.



Alarm Inputs and Outputs

Offering two alarm inputs and two outputs allows the Thermal Camera to be integrated with intruder alarm systems.



VCP-42 THERMAL RANGE

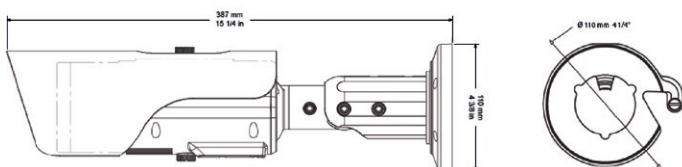
CONCEPT PRO IP THERMAL CAMERA RANGE



SPECIFICATION

THERMAL CAMERA						TEMPERATURE DETECTION	
Detector Type	Uncooled IRFPA Microbolometer					Detection Mode	Spot, Line, Area
Effective Pixels	400(H) x 300(V)					Detection Preset	Spot: 20, Line: 2, Area: 16
Pixel Size	17um					Temperature Alarm	Over temperature alarm, Temperature difference alarm
Thermal Sensitivity (NETD)	40mK @F1.0, 300K					Accuracy	±2°C / ±2%
Spectral Range	8~14um					Response Time	≤30ms
Image Setting	Polarity LUT/ DVE/ Mirror/ FCC/ /3D DNR Brightness/ Contrast/ ROI					Temperature working environment	-40 °C ~ 60 °C (-40°F ~ 140 °F)
Color Palettes	Black-Heat /White-Heat/Rainbow/Iron-Red up to 17 modes					Theoretical Thermal Detection Range	-40 °C ~ 200 °C (-40°F ~ 392 °F)
THERMAL LENS						Temperature display mode	Temperature target ≤5°C, Display absolute temperature value;
Lens Type	Fixed						Temperature target ≤5°C, Display relative temperature value (temperature difference DEV = highest value - average)
Focus Control	Manual Focus					NETWORK	
Focal Length	8mm	15mm	25mm	35mm	50mm	Ethernet	RJ-45 (10/100 Base-T)
F No.	F1.0	F1.0	F1.0	F1.0	F1.0	Protocols:	IPv4/IPv6 ,HTTP,RTSP/RTP/RTCP, TCP/UDP, DHCP, DNS, PPPOE, SMTP, SIP ,802.1x
Angle of View	H: 43.6° V:18°	H: 24° V:18°	H: 14.6° V:11°	H: 10.5° V:7.8°	H: 7.3° V:5.5°	Interoperability	ONVIF, CGI
Detection Distance Fire(1m*1m)	235m	440m	735m	1030m	1470m	Streaming Method	Unicast
Detection Distance Person (1.8m*0.5m)	220m	420m	700m	990m	1410m	Max. User Access	10 Users
Detection Distance Vehicle (2.3m*2.3m)	540m	1010m	1690m	2370m	3380m	Edge Storage	Mirco SD card up to 128GB
Recognition Distance Fire(1m*1m)	78m	145m	245m	340m	490m	Web Viewer	<IE11, Chrome, Firefox
Recognition Distance Person (1.8m*0.5m)	75m	140m	230m	330m	470m	Web Language	English, Chinese, Polish, Italian, Portuguese, Spanish, Russian, French, Czech, Hungarian
Recognition Distance Vehicle (2.3m*1.3m)	180m	340m	560m	790m	1120m	INTERFACE	
VIDEO AND AUDIO						Ethernet	1 Ethernet (10/100 Base-T) RJ-45 Connector
Compression	H.265, H.264, MJPEG					Audio Interface	1ch Audio In,1ch Audio Out
Frame Rate	Main Stream: D1 @25/30fps Sub Stream: CIF @25/30fps					Alarm	2ch Alarm In,2ch Alarm Out
Bit Rate Control	CBR/VBR					RS485, SVO, Reset	Yes
Bit Rate	100Kbps~6Mbps					GENERAL	
Region of Interest	Yes, 8 area					Power Supply	DC12V/POE
Electronic Image Stabilization(EIS)	N/A					Power Consumption	Max 5W
Digital Zoom	16x					Operating Temperature	-10 °C ~ 55 °C (14°F ~ 131 °F)
Mirror	Yes					Storage Conditions	0~ 90% RH
Defog	Yes					Certifications	CE /FCC
Motion Detection	Yes					Ingress Protection	IP66
Privacy Masking	Yes, up to 5 areas					Casing	Metal
DVE Image Enhance	Yes					Dimensions	Ø110x388mm
Audio Compression	G.711, AMR, RAW_PCM					Net Weight	1900g

DIMENSIONS



COMPATIBLE WITH



CONCEPT PRO IP RECORDING RANGE