



Concept Pro

8MP

**2.8mm
Fixed
Lens**

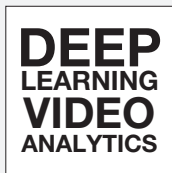
**30M
IR**

IP

CVP9316DLIREL-IP8M/2.8 CVP9316DLIREL-IP8M-G/2.8

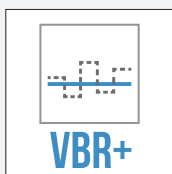
Concept Pro 8MP IP Deep Learning Fixed External Turret Camera

The CVP9316DLIREL-IP8M/2.8 model is an IP camera that has been designed to deliver the highest image quality for demanding external environments. This weather-resistant external turret features a 2.8mm fixed lens, smart infrared LEDs with 30m illumination range, and provides crisp 8-megapixel video. It comes equipped with alarm and audio functionality for the most advanced installation needs. This camera is also designed for excellent compatibility with the Concept Pro range of network video recorders.



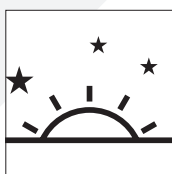
Deep Learning Video Analytics

Reduce false motion detection alarms by up to 95% using new Deep Learning technology. Trained with powerful deep learning algorithms, the camera can detect and classify human, car, and bicycles based upon specific line/zone and timing criteria. As a result, false alarms from sources such as lights, animals, foliage, weather, and other objects are effectively filtered and reduced. Additionally, this camera supports Deep Learning Motion Detection with human/car/bike classification to reduce false alarms on traditional motion detection events.



Intelligent, Efficient Bit Rate Control

Reduce camera streaming bit rates by up to 90% by using Variable Bit Rate (VBR) or VBR+ smart bit rate control settings. These dynamic features maximise overall image quality while minimising camera stream bit rates. This results in lower network bandwidth usage and extended recording storage retention time.



Enhanced Low Light Performance

This model utilises an Enhanced Low Light CMOS sensor with greater light sensitivity, resulting in the camera capturing colour images long after standard CCTV cameras have switched to black & white night mode and brighter images in darker conditions.

KEY FEATURES

- ◆ Max. 20FPS @ 8MP
- ◆ 2.8mm Fixed Lens
- ◆ Up to 30m Smart IR Illumination
- ◆ Deep Learning Motion Detection
- ◆ H.265 Video Codec & VBR+
Smart Bit Rate Control
- ◆ Alarm & Audio I/O
- ◆ Enhanced Low Light Performance

OTHER FEATURES

- ◆ PoE/DC12V Power Input
- ◆ True WDR, ATW, BLC, Defog, 3D-DNR
- ◆ Manual Regions of Interest
- ◆ ONVIF Profile S Compliant
- ◆ IP66-rated

COMPATIBLE
WITH



CONCEPT PRO
IP RECORDING
RANGE

CVP9316DLIREL-IP8M/2.8

CVP9316DLIREL-IP8M-G/2.8

Concept Pro 8MP IP Deep Learning
Fixed External Turret Camera

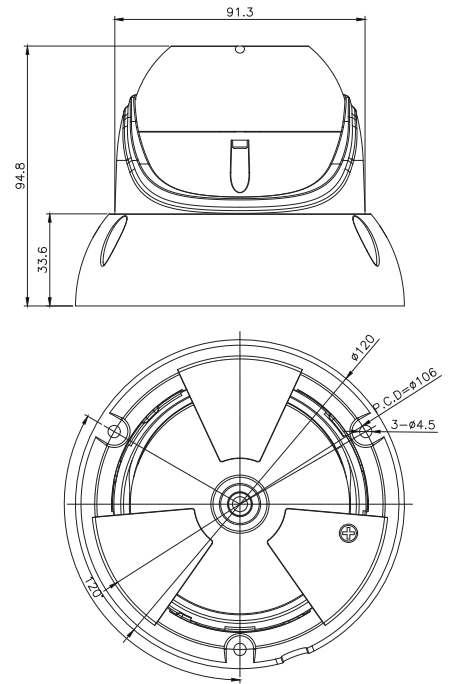
Concept Pro

SPECIFICATION

Model/Feature	CVP9316DLIREL-IP8M/2.8 CVP9316DLIREL-IP8M-G/2.8	
Video Output Type	IP	
Image Sensor	1/2.8" Progressive Scan CMOS	
Signal System	PAL/NTSC	
Min. Illumination	Enhanced Low Light Performance Colour: 0.004 Lux @ (F2.0, AGC ON) B&W: 0 lux with IR LEDs on	
Camera	Electronic Shutter	Auto/Manual, 1/25 to 1/5,000s
	S/N Ratio	≥48dB
	IR LEDs	x2
	IR Illumination Range	Max. 30m
	IR Control	Auto/Off
	Adaptable IR	Auto
	Pan/Tilt/Rotation Range	P: 0°-349°, T: 0°-80°, R: 0°-360°
	Lens Type	Fixed Lens
	Mount Type	Built-in
	Focal Length	f=2.8mm
Aperture	F2.0	
Angle of View	H: 100°, V: 55°, D: 114°	
Focus	Fixed Focus	
Iris	Fixed Iris	
Compression	H.265/H.264 with VBR+ Smart Codec Option	
Streaming Capability	Triple Streaming + SVC Stream	
Resolution	3840x2160, 2592x1944, 2592x1520, 2304x1296, 2048x1536, 1920x1080, 1280x1024, 1024x768, 1280x720, 704x576, 704x480, 640x480, 640x360, 352x288, 352x240	
Frame Rate	Stream 1: Max. 20FPS @ 3840x2160 Stream 2: Max. 20FPS @ 640x480 Stream 3: Max. 20FPS @ 640x480	
Bit Rate Control	CBR/VBR/VBR+	
Bit Rate	Stream 1: 1,000-8,000kbps Stream 2: 600-2,000kbps Stream 3: 600-2,000kbps	
Day/Night	True D&N with ICR (Auto/Day/Night/Schedule)	
Backlight Compensation	Yes	
Wide Dynamic Range	True WDR	
White Balance	ATW/Manual (Indoor/Fluorescent/Outdoor)	
Gain Control	Auto	
Noise Reduction	3D-DNR (Auto/Manual)	
Region of Interest	Manual (Max. 8 Regions)	
Defog	Yes	
Slow Shutter	Off/X2/X4/X8	
Image Setting	Mirror/Flip	
Image Adjustment	Brightness, Contrast, Colour, Sharpness	
Privacy Masking	Yes (Max. 4 Areas)	
Motion Detection	Yes (Max. 4 Areas)	
Tamper Detection	Yes	
Deep Learning Motion Detection	Yes (Human Detection)	
Deep Learning Video Analytics	Yes (Human/Vehicle/Bike Classification; Intrusion, Line Crossing, Region Enter/Exit, Loitering, Stopping, Counter Detection) *Compatible with select Concept Pro NVRs	
Transmission Distance	Max. 100m over Ethernet	
Network	Ethernet	x1 RJ45 10M/100M Ethernet
	Protocol	IPv4, IPv6, IGMP, ICMP, ARP, TCP, UDP, DHCP, RTP, RTSP, DNS, DDNS, NTP, SMTP, FTP, UPnP, HTTP, HTTPS, SSL/TLS
Interoperability	ONVIF Profile S, HTTP/RTSP API	
ONVIF Channels	Max. 4 Streams	
Streaming Method	Unicast/Multicast	
Max. User Access	x10	
Edge Storage	Local PC (Snapshot/Recording)	
Interface	Video Interface	-
	Alarm Interface	Alarm In x1, Alarm Out x1
Audio Interface	Audio In x1 (RCA), Audio Out x1 (RCA)	
Audio Compression	G.711u-law (8kHz)	
RS-485	-	
Control Protocol	N/A	
Reset Button	Yes	
General	Power Supply	PoE 802.3af (Class 0)/DC12V
	Power Consumption	PoE: Max. 8.9W with IR on DC12V: Max. 6.3W with IR on
	Power Output	-
	Operating Temperature	-20°C to +50°C
	Operating Humidity	0% to 90%
	Ingress Protection	IP66
	Vandal Resistance	-
	Housing Materials	Aluminum Diecasting
	RAL	CVP9316DLIREL-IP8M/2.8: RAL 9010 Pure White CVP9316DLIREL-IP8M/2.8-G: RAL 7021 Black Grey
	Dimensions	(Ø) 120mm x (H) 94.8mm
Net Weight	≈700g	
Gross Weight	≈850g	
Certification	Certifications	CE

DIMENSIONS

All measurements are in mm.



ORDER CODE

- **CVP9316DLIREL-IP8M/2.8** Concept Pro 8MP IP Deep Learning Fixed External Turret Camera
- **CVP9316DLIREL-IP8M-G/2.8** Concept Pro 8MP IP Deep Learning Fixed External Turret Camera - Grey

OTHER PRODUCTS IN THE RANGE

- **CVP9316DLCS-IP5M/2.8** Concept Pro 5MP IP Colour Smart Deep Learning External Turret Camera
- **CVP9316DEIREL-IP5M/2.8** Concept Pro 5MP IP Enhanced Low Light Fixed External Turret Camera
- **CVP9316DEIREL-IP5M-G/2.8** Concept Pro 5MP IP Enhanced Low Light Fixed External Turret Camera - Grey
- **CVP9316DEIREL-IP5M-Z** Concept Pro 5MP IP Enhanced Low Light Motorised External Turret Camera

RECOMMENDED ACCESSORIES

- **CP-BASE-1-V2** Concept Pro Small Junction Box
- **CP-BASE-1-V2-G** Concept Pro Small Junction Box - Black Grey
- **CP-WM-1-V2** Concept Pro Small Wall Mount
- **CP-WM-1-V2-G** Concept Pro Small Wall Mount - Black Grey
- **CP-PM-1-V2** Concept Pro Small Pendant Mount
- **CP-PM-1-V2-G** Concept Pro Small Pendant Mount - Black Grey
- **CP-PLM-V2** Concept Pro Pole Mount
- **CP-CM-V2** Concept Pro Corner Mount
- **CAT6-305 305m** CAT6 Cable (Green)
- **VA-SW4/8/16POE-IP** 4/8/16 Channel PoE Switch

COMPATIBLE
WITH



CONCEPT PRO
IP RECORDING
RANGE

CVP9316DLIREL-IP8M/2.8

CVP9316DLIREL-IP8M-G/2.8



Concept Pro 8MP IP Deep Learning
Fixed External Turret Camera

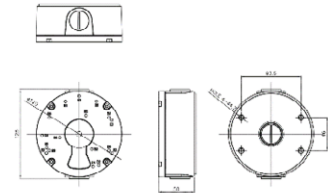
ACCESSORIES

DIMENSIONS

CP-BASE-1-V2

CP-BASE-1-V2-G

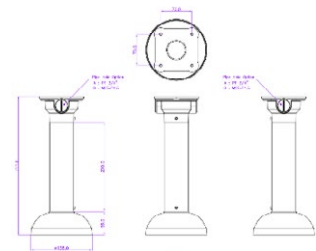
Concept Pro Small
Junction Box



CP-PM-1-V2

CP-PM-1-V2-G

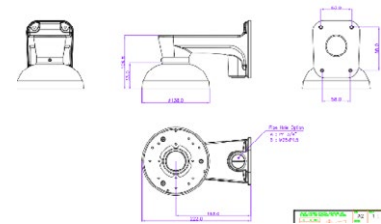
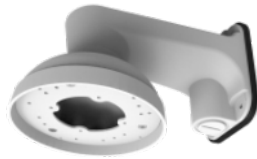
Concept Pro Small
Pendant Mount



CP-WM-1-V2

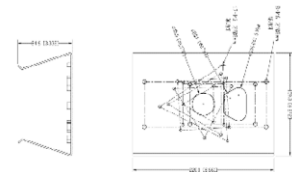
CP-WM-1-V2-G

Concept Pro Small
Wall Mount



CP-PLM-V2

Concept Pro Pole Mount
(can be combined with
CP-BASE-1-V2)



CP-CM-V2

Concept Pro Corner Mount
(can be combined with
CP-BASE-1-V2)

