



Concept Pro

5MP

**2.8-8mm
Motorised
Lens**

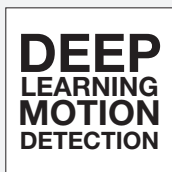
**30M
IR**

IP

CVP9316DEIREL-IP5M-Z

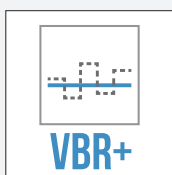
Concept Pro 5MP IP Enhanced Low Light Motorised External Turret Camera

The CVP9316DEIREL-IP5M-Z model is an IP camera that has been designed to deliver the highest image quality for demanding external environments. This weather-resistant external turret features a 2.8-8mm motorised lens, smart infrared LEDs with 30m illumination range, and provides crisp 5-megapixel video. It comes equipped with alarm and audio functionality for the most advanced installation needs. This camera is also designed for excellent compatibility with the Concept Pro range of network video recorders.



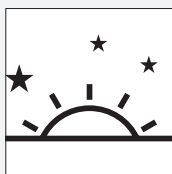
Deep Learning Motion Detection

Reduce false motion detection alarms by up to 95% using new Deep Learning Motion Detection technology. Trained with deep learning algorithms, the camera can recognise and trigger motion detection events only if a person is detected in the specified area. As a result, false alarms from sources such as lights, animals, foliage, weather, and other objects are effectively filtered and reduced.



Intelligent, Efficient Bit Rate Control

Reduce camera streaming bit rates by up to 90% by using Variable Bit Rate (VBR) or VBR+ smart bit rate control settings. These dynamic features maximise overall image quality while minimising camera stream bit rates. This results in lower network bandwidth usage and extended recording storage retention time.



Enhanced Low Light Performance

This model utilises an Enhanced Low Light CMOS sensor with greater light sensitivity, resulting in the camera capturing colour images long after standard CCTV cameras have switched to black & white night mode and brighter images in darker conditions.

KEY FEATURES

- ◆ Max. 25FPS @ 5MP
- ◆ 2.8-8mm Motorised Lens
- ◆ Up to 30m Smart IR Illumination
- ◆ Deep Learning Motion Detection
- ◆ H.265 Video Codec & VBR+ Smart Bit Rate Control
- ◆ Alarm & Audio I/O
- ◆ Enhanced Low Light Performance

OTHER FEATURES

- ◆ PoE/DC12V Power Input
- ◆ True WDR, ATW, BLC, Defog, 3D-DNR
- ◆ Manual Regions of Interest
- ◆ ONVIF Profile S Compliant
- ◆ IP66-rated

COMPATIBLE WITH



CONCEPT PRO
IP RECORDING
RANGE

CVP9316DEIREL-IP5M-Z

Concept Pro 5MP IP Enhanced Low Light
Motorised External Turret Camera

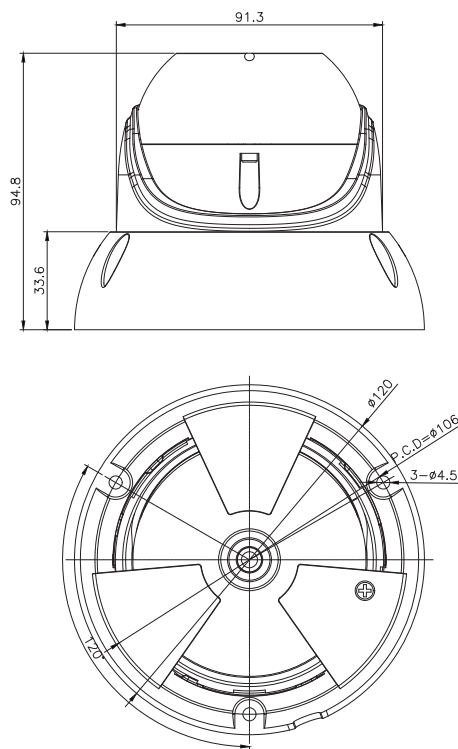
Concept  Pro

SPECIFICATION

Model/Feature	CVP9316DEIREL-IP5M-Z	
Video Output Type	IP	
Image Sensor	1/2.8" Progressive Scan CMOS	
Signal System	PAL/NTSC	
Min. Illumination	Enhanced Low Light Performance Colour: 0.003 Lux @ (F1.6, AGC ON) B&W: 0 lux with IR LEDs on	
Camera	Electronic Shutter	Auto/Manual, 1/25 to 1/5,000s
	S/N Ratio	≥48dB
	IR LEDs	x2
	IR Illumination Range	Max. 30m
	IR Control	Auto/Off
	Adaptable IR	Auto
	Pan/Tilt/Rotation Range	P: 0°-349°, T: 0°-80°, R: 0°-360°
Lens	Lens Type	Motorised Lens
	Mount Type	Built-in
	Focal Length	f=2.8-8mm
	Aperture	F1.6
Angle of View	H: 102.8-50°, V: 74.1-37.4°, D: 142.5-62.5°	
Focus	Auto/Manual	
Iris	Fixed Iris	
Video	Compression	H.265/H.264 with VBR+ Smart Codec Option
	Streaming Capability	Triple Streaming + SVC Stream
	Resolution	2592x1944, 2592x1520, 2304x1296, 2048x1536, 1920x1080, 1280x1024, 1024x768, 1280x720, 704x576, 704x480, 640x480, 640x360, 352x288, 352x240
	Frame Rate	Stream 1: Max. 25FPS @ 2592x1944 Stream 2: Max. 25FPS @ 640x480 Stream 3: Max. 25FPS @ 640x480
	Bit Rate Control	CBR/VBR/VBR+
	Bit Rate	Stream 1: 1,000-8,000kbps Stream 2: 600-2,000kbps Stream 3: 600-2,000kbps
	Day/Night	True D&N with ICR (Auto/Day/Night/Schedule)
	Backlight Compensation	Yes
	Wide Dynamic Range	True WDR
	White Balance	ATW/Manual (Indoor/Fluorescent/Outdoor)
	Gain Control	Auto
	Noise Reduction	3D-DNR (Auto/Manual)
	Region of Interest	Manual (Max. 8 Regions)
	Defog	Yes
Slow Shutter	Off/X2/X4/X8	
Image Setting	Mirror/Flip	
Image Adjustment	Brightness, Contrast, Colour, Sharpness	
Privacy Masking	Yes (Max. 4 Areas)	
Motion Detection	Yes (Max. 4 Areas)	
Tamper Detection	Yes	
Deep Learning Motion Detection	Yes (Human Detection)	
Deep Learning Video Analytics	-	
Transmission Distance	Max. 100m over Ethernet	
Ethernet	x1 RJ45 10M/100M Ethernet	
Protocol	IPv4, IPv6, IGMP, ICMP, ARP, TCP, UDP, DHCP, RTP, RTSP, RTCP, DNS, DDNS, NTP, SMTP, FTP, UPnP, HTTP, HTTPS, SSL/TLS	
Network	Interoperability	ONVIF Profile S, HTTP/RTSP API
	ONVIF Channels	Max. 4 Streams
	Streaming Method	Unicast/Multicast
	Max. User Access	x10
Edge Storage	Local PC (Snapshot/Recording)	
Video Interface	-	
Alarm Interface	Alarm In x1, Alarm Out x1	
Audio Interface	Audio In x1 (RCA), Audio Out x1 (RCA)	
Interface	Audio Compression	G.711u-law (8kHz)
	RS-485	-
Control Protocol	N/A	
Reset Button	Yes	
Power Supply	PoE 802.3af (Class 0)/DC12V	
Power Consumption	PoE: Max. 6.2W with IR on DC12V: Max. 5.0W with IR on	
Power Output	-	
Operating Temperature	-20°C to +50°C	
Operating Humidity	0% to 90%	
General	Ingress Protection	IP66
	Vandal Resistance	-
	Housing Materials	Aluminum Diecasting RAL RAL9010 Pure White
	Dimensions	(Ø) 120mm × (H) 94.8mm
Net Weight	≈700g	
Gross Weight	≈850g	
Certification	Certifications CE/RoHS	

DIMENSIONS

All measurements are in mm.



ORDER CODE

- **CVP9316DEIREL-IP5M-Z** Concept Pro 5MP IP Enhanced Low Light Motorised External Turret Camera

OTHER PRODUCTS IN THE RANGE

- **CVP9316DLCS-IP5M/2.8** Concept Pro 5MP IP Colour Smart Deep Learning External Turret Camera
- **CVP9316DEIREL-IP5M/2.8** Concept Pro 5MP IP Enhanced Low Light Fixed External Turret Camera
- **CVP9316DEIREL-IP5M-G/2.8** Concept Pro 5MP IP Enhanced Low Light Fixed External Turret Camera - Grey
- **CVP9316DLIREL-IP8M/2.8** Concept Pro 8MP IP Deep Learning Fixed External Turret Camera
- **CVP9316DLIREL-IP8M-G/2.8** Concept Pro 8MP IP Deep Learning Fixed External Turret Camera - Grey

RECOMMENDED ACCESSORIES

- **CP-BASE-1-V2** Concept Pro Small Junction Box
- **CP-WM-1-V2** Concept Pro Small Wall Mount
- **CP-PM-1-V2** Concept Pro Small Pendant Mount
- **CP-PLM-V2** Concept Pro Pole Mount
- **CP-CM-V2** Concept Pro Corner Mount
- **CAT6-305 305m** CAT6 Cable (Green)
- **VA-SW4/8/16POE-IP** 4/8/16 Channel PoE Switch

COMPATIBLE
WITH



CONCEPT PRO
IP RECORDING
RANGE

CVP9316DEIREL-IP5M-Z

Concept Pro 5MP IP Enhanced Low Light Motorised External Turret Camera

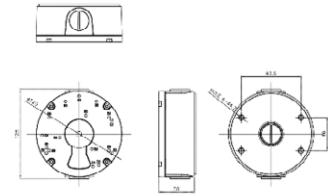
Concept Pro

ACCESSORIES

DIMENSIONS

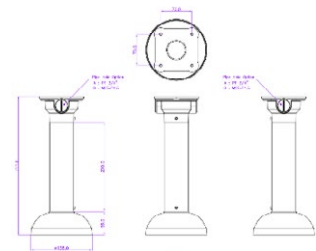
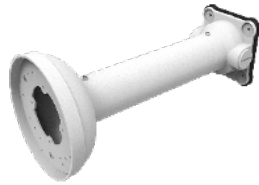
CP-BASE-1-V2

Concept Pro Small Junction Box



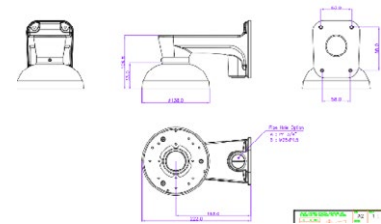
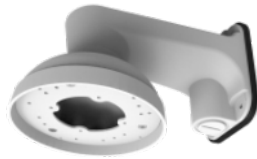
CP-PM-1-V2

Concept Pro Small Pendant Mount



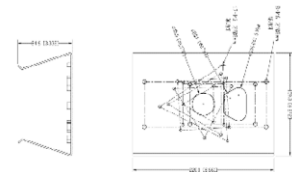
CP-WM-1-V2

Concept Pro Small Wall Mount



CP-PLM-V2

Concept Pro Pole Mount
(can be combined with CP-BASE-1-V2)



CP-CM-V2

Concept Pro Corner Mount
(can be combined with CP-BASE-1-V2)

