

Concept Pro



2MP

2.8mm
Fixed
Lens20M
IR

IP

CVP5325DEIRH-IP2M/2.8

Concept Pro 2MP IP HDMI Output Fixed Compact Internal Dome Camera

The CVP5325DEIRH-IP2M/2.8 model is an IP camera that has been designed to deliver the highest image quality for internal environments. This compact internal dome features a 2.8mm fixed lens, smart infrared LEDs with 20m illumination range, and provides crisp 2-megapixel video. It has a built-in HDMI video output for connection a public viewing monitor. This camera is also designed for excellent compatibility with the Concept Pro range of network video recorders.

KEY FEATURES

- ◆ Max. 25FPS @ 2MP
- ◆ 2.8mm Fixed Lens
- ◆ Up to 20m Smart IR Illumination
- ◆ Deep Learning Motion Detection
- ◆ H.265 Video Codec & VBR+ Smart Bit Rate Control
- ◆ HDMI Video Output

OTHER FEATURES

- ◆ NDAA-compliant
- ◆ Digital WDR, ATW, BLC, Defog, 3D-DNR
- ◆ ONVIF Profile S Compliant



HDMI Video Output

Connect this camera directly to a monitor using the built-in HDMI video output. The HDMI output supports live 1080p video transmission and is designed for internal environments that require a live public viewing monitor, such as retail or other safety applications.

**DEEP
LEARNING
MOTION
DETECTION**

Deep Learning Motion Detection

Reduce false motion detection alarms by up to 95% using new Deep Learning Motion Detection technology. Trained with deep learning algorithms, the camera can recognise and trigger motion detection events only if a person is detected in the specified area. As a result, false alarms from sources such as lights, animals, foliage, weather, and other objects are effectively filtered and reduced.



Internal Cable Connections

The installers needs have been carefully considered in the design of this product, utilising internal cable connections to aid in the ease of installation, reducing the need for complicated work in impractical installation areas.

COMPATIBLE
WITH



CONCEPT PRO
IP RECORDING
RANGE

CVP5325DEIRH-IP2M/2.8

Concept Pro 2MP IP HDMI Output
Fixed Compact Internal Dome Camera

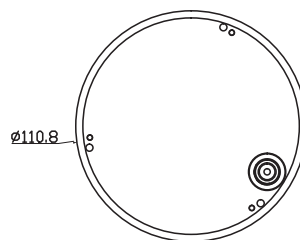
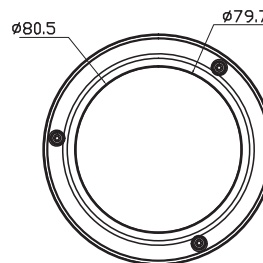
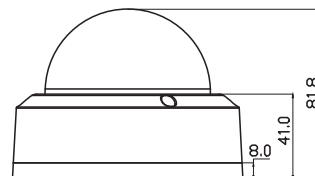
Concept Pro

SPECIFICATION

| Model/Feature | CVP5325DEIRH-IP2M/2.8 | |
|-----------------------|--|---|
| Video Output Type | IP | |
| Image Sensor | 1/2.9" Progressive Scan CMOS | |
| Signal System | PAL/NTSC | |
| Min. Illumination | Normal Performance Colour: 0.004 Lux @ (F2.0, AGC ON) B&W: 0 lux with IR LEDs on | |
| Camera | Electronic Shutter | Auto/Manual, 1/25 to 1/5,000s |
| | S/N Ratio | TBD |
| | Built-in Illumination | x4 IR LEDs |
| | IR Illumination Range | Max. 20m |
| | IR Control | Auto/Off |
| | Adaptable IR | Auto |
| | Pan/Tilt/Rotation Range | Pan: 0°-353°, Tilt: 0°-70°, Rotation: 0°-176° |
| Lens | Lens Type | Fixed Lens |
| | Mount Type | Built-in |
| | Focal Length | f=2.8mm |
| | Aperture | F2.0 |
| Video | Angle of View | H: 109°, V: 59°, D: 128° |
| | Focus | Fixed |
| | Iris | Fixed Iris |
| | Compression | H.265/H.264/MJPEG |
| | Streaming Capability | Triple Streaming + SVC Stream |
| | Resolution | 1920x1080, 1280x1024, 1024x768, 1280x720, 704x480, 640x480, 640x360, 352x288, 352x240 |
| | Frame Rate | Stream 1: Max. 25FPS @ 1920x1080 Stream 2: Max. 25FPS @ 640x480 Stream 3: Max. 25FPS @ 640x480 |
| | Bit Rate Control | CBR/VBR/VBR+ |
| | Bit Rate | Stream 1: 1,000-8,000kbps Stream 2: 600-2,000kbps Stream 3: 600-2,000kbps |
| | Day/Night | True D&N with ICR (Auto/Day/Night/Schedule) |
| | Backlight Compensation | Yes |
| | Wide Dynamic Range | D-WDR, 100dB |
| | White Balance | ATW/Manual (Indoor/Fluorescent/Outdoor) |
| | Gain Control | Auto |
| | Noise Reduction | 3D-DNR (Auto/Manual) |
| | Region of Interest | Supported, Max. 8 Areas |
| | Defog | Yes |
| | Slow Shutter | Off/X2/X4/X8 |
| | Image Setting | Brightness, Contrast, Colour, Sharpness |
| | Image Adjustment | Mirror, Flip |
| Privacy Masking | Yes (Max. 4 Polygonal Areas) | |
| Transmission Distance | Max. 100m over Ethernet | |
| Event | Basic Motion Detection | Supported, Max. 4 Areas |
| | Tamper Detection | Supported |
| | Basic Video Analytics | - |
| | System Event | Booting Event, Temperature Fail |
| | Deep Learning Motion Detection | Supported, Human/Car/Bike Classification |
| Network | Deep Learning Video Analytics | - |
| | Ethernet | x1 RJ45 10M/100M Ethernet |
| | Protocol | IPv4, IPv6, IGMP, ICMP, ARP, TCP, UDP, DHCP, RTP, RTSP, RTCP, DNS, DDNS, NTP, SMTP, FTP, UPnP, HTTP, HTTPS, SSL/TLS |
| | Interoperability | ONVIF Profile S, HTTP/RTSP API |
| | ONVIF Channels | Max. 4 Streams |
| Interface | Streaming Method | Unicast/Multicast |
| | Max. User Access | x10 |
| | Edge Storage | MicroSD (Snapshot), Local PC (Snapshot/Recording) |
| | Video Interface | x1 HDMI Out (Max. 1080p) |
| | Alarm Interface | - |
| | Audio Interface | - |
| | Audio Compression | N/A |
| | RS-485 | - |
| | Control Protocol | N/A |
| | Reset Button | Yes |
| General | Power Supply | PoE (802.3af)/DC12V |
| | Power Consumption | TBD |
| | Power Output | - |
| | Operating Temperature | -20°C to +50°C |
| | Operating Humidity | 0% to 90% |
| | Ingress Protection | - |
| | Vandal Resistance | IK10 |
| | Housing Materials | Aluminum Diecasting |
| | RAL | RAL9010 Pure White |
| | Dimensions | Ø114mm x (H) 81.8mm |
| Certification | Net Weight | ≈450g |
| | Gross Weight | ≈600g |
| | Certifications | CE, FCC |

DIMENSIONS

All measurements are in mm.



ORDER CODE

- **CVP5325DEIRH-IP2M/2.8** Concept Pro 2MP IP HDMI Output Fixed Compact Internal Dome Camera

OTHER PRODUCTS IN THE RANGE

- **CVP5325DEIREL-IP5M/2.8** Concept Pro 5MP IP Enhanced Low Light Fixed Compact External Dome Camera

RECOMMENDED ACCESSORIES

- **CP-BASE-1-V2** Concept Pro Small Junction Box
- **CP-PM-1-V2** Concept Pro Small Pendant Mount
- **CP-WM-1-V2** Concept Pro Small Wall Mount
- **CP-PLM-V2** Concept Pro Pole Mount
- **CP-CM-V2** Concept Pro Corner Mount
- **CP-TM-1-V2** Concept Pro Small In-ceiling/Tile Mount

COMPATIBLE WITH



CONCEPT PRO IP RECORDING RANGE

CVP5325DEIRH-IP2M/2.8

Concept Pro 2MP IP HDMI Output
Fixed Compact Internal Dome Camera

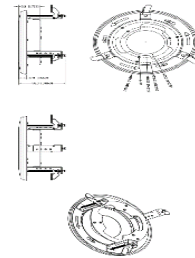
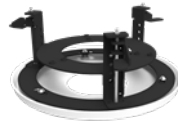


ACCESSORIES

DIMENSIONS

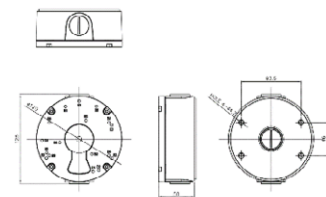
CP-TM-1-V2

Concept Pro Small
In-ceiling/Tile Mount



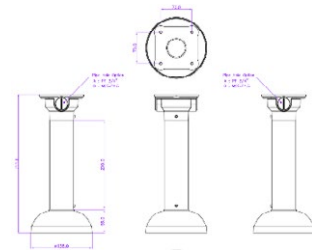
CP-BASE-1-V2

Concept Pro Small
Junction Box



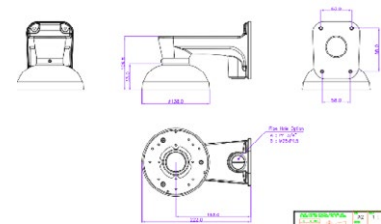
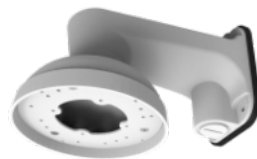
CP-PM-1-V2

Concept Pro Small
Pendant Mount



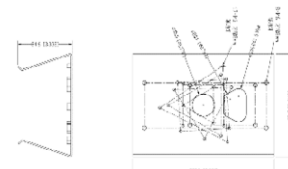
CP-WM-1-V2

Concept Pro Small
Wall Mount



CP-PLM-V2

Concept Pro Pole Mount
(can be combined with
CP-BASE-2-V2)



CP-CM-V2

Concept Pro Corner Mount
(can be combined with
CP-BASE-2-V2)

