



Concept Pro

2MP	2.7-13.5mm Motorised Lens	80M IR	4 in 1
------------	------------------------------------------	-------------------	---------------

AIR8025EL-AHD2M-Z

Concept Pro Lite 2MP 4-in-1 Analogue Motorised External Bullet Camera

The AIR8025EL-AHD2M-Z model is a 4-in-1 analogue camera that has been designed to deliver the highest image quality for demanding external environments. This external bullet features a 2.8-12mm motorised lens, smart infrared LEDs with 80m illumination range, and provides crisp 2-megapixel video at real-time frame rates with true wide dynamic range and enhanced low light performance. This camera is also designed for excellent compatibility with the Concept Pro range of hybrid digital video recorders.

WDR

True Wide Dynamic Range

With true wide dynamic range, this camera can capture sharp images throughout the entire field of view, even when there are severe differences between light levels.

Enhanced Low Light Performance

This CCTV camera utilises an Enhanced Low Light CMOS sensor with greater light sensitivity, resulting in the camera capturing colour images long after standard CCTV cameras have switched to black and white night mode.

**DC12V
Out**

DC12V Power Output

This CCTV camera also provides a DC12V 100mA power output that can be conveniently used to power some auxiliary equipment rather than using a separate power supply adapter.

KEY FEATURES

- ◆ Max. 25FPS @2MP
- ◆ 2.7-13.5mm Motorised Lens
- ◆ Up to 80m Smart IR Illumination
- ◆ 4-in-1 Operation (AHD/TVI/CVI/CVBS)
- ◆ Enhanced Low Light Performance
- ◆ True Wide Dynamic Range
- ◆ DC12V/AC24V Dual Power Input

OTHER FEATURES

- ◆ DC12V Power Output
- ◆ Up the Coax Coaxitron Support
- ◆ AGC, Sens-up, AWB, BLC, HLC

ANALOGUE HD TYPICAL CABLE DISTANCE



	5MP	2MP	720P
COAX (RG59)	UP TO 500M	UP TO 500M	UP TO 500M
CAT5e	UP TO 200M	UP TO 305M	UP TO 350M
CAT6	UP TO 200M	UP TO 305M	UP TO 350M

*Approximate distances calculated using HD MasterBaluns. Actual transmission range will vary depending on type and quality of cable and baluns.

COMPATIBLE WITH

**CONCEPT PRO
AHD RECORDING
RANGE**

AIR8025EL-AHD2M-Z

Concept Pro Lite 2MP 4-in-1 Analogue
Motorised External Bullet Camera

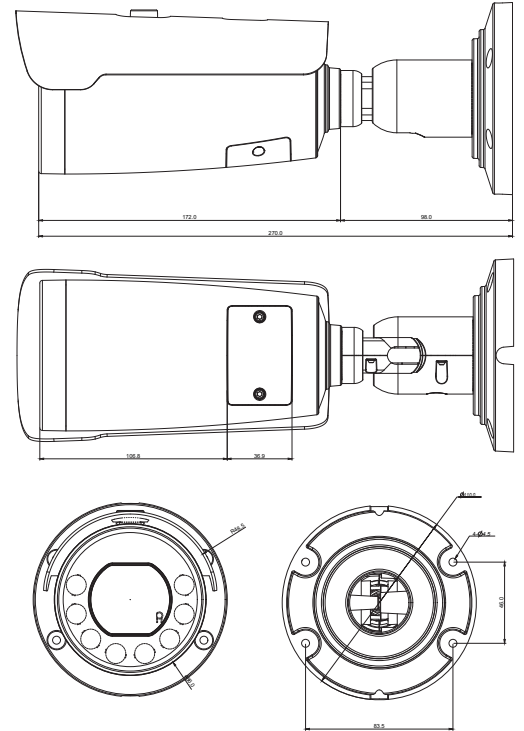
Concept Pro

SPECIFICATION

Model/Feature	AIR8025EL-AHD2M-Z
Image Sensor	1/2.8" Progressive Scan CMOS
Video Output Type	AHD/TVI/CVI/CVBS
Signal System	PAL/NTSC
Min. Illumination	Colour: 0.02 lux (Enhanced Low Light) B&W: 0.002 lux (Enhanced Low Light) 0 lux with IR on
Camera	
Electronic Shutter	Auto/Manual, 1/25-1/25,600s
S/N Ratio	≥50dB
IR LEDs	x8
IR Illumination Range	Max. 80m
IR Control	On/Off
Adaptable IR	Auto
Pivot Axis	Pan: 0°-360°, Tilt: 0°-75°, Rotation: 0°-360°
Lens	
Lens Type	Motorised
Mount Type	Built-in
Focal Length	f=2.7-13.5mm
Aperture	F1.3-F2.7
Angle of View	H: 108.78-28.76°, V: 57.22-16.2°, D: 130.54-33°
Focus	Auto/Manual
Iris	Fixed
Video	
Resolution	2MP (1920 x 1080), SD (960 x 576)
Frame Rate	AHD/TVI/CVI: 25/30FPS @ 2MP CVBS: 25/30FPS @ SD
Day/Night	True Day & Night with ICR (Auto/Colour/B&W/EXT)
Backlight Compensation	BLC/HLC
Wide Dynamic Range	True WDR
White Balance	Auto/AutoExt/Preset/Manual
Gain Control	Auto (AGC, 0-20)
Noise Reduction	2D/3D-DNR (High/Middle/Low/Off)
Motion Detection	Yes
Defog	-
Image Setting	Freeze, Flip
Image Adjustment	Brightness, Sharpness, Colour Gain, Ace, Gamma
Privacy Masking	Yes
Sens-Up	Yes (x2/x4/x8/x16/x32/Off)
Transmission Distance	Max. 500m (1Vp-p 75Ω)
Video Output	x1 1.0Vp-p 75Ω BNC/x1 2-pin UTP
Interface	
Audio Interface	-
RS-485	-
Control Protocol	N/A
Up the Coax (Coaxitron) Support	Yes
OSD Buttons	Yes
General	
Power Supply	DC12V±10%/AC24V±10%
Power Output	x1 DC12V 100mA
Power Consumption	Max. 9W
Operating Temperature	-30°C to +50°C
Operating Humidity	20-80% RH
Ingress Protection	IP66
Impact Resistance	-
Housing Materials	Aluminum Diecasting
RAL	RAL 7021 Black Grey
Dimension	Ø86mm x (L) 270mm without sunshield
Net Weight	≈800g
Gross Weight	≈1,250g
Certification	
Certifications	CE

DIMENSIONS

All measurements are in mm.



ORDER CODE

- **AIR8025EL-AHD2M-Z** Concept Pro Lite 2MP 4-in-1 Analogue Motorised External Bullet Camera

OTHER PRODUCTS IN THE RANGE

- **AIR8025EL-AHD5M-Z** Concept Pro 5MP 4-in-1 Analogue Motorised External Bullet Camera

RECOMMENDED ACCESSORIES

- **CP-BASE-1-V2-G** Concept Pro Small Junction Box - Black Grey
- **CP-WM-1-V2-G** Concept Pro Small Wall Mount - Black Grey
- **CP-PM-1-V2-G** Concept Pro Small Pendant Mount - Black Grey
- **CP-PLM-V2** Concept Pro Pole Mount
- **CP-CM-V2** Concept Pro Corner Mount
- **RG59K-100** RG59 Coaxial Cable 100m (Black)
- **RG59K-500** RG59 Coaxial Cable 500m (Black)

COMPATIBLE
WITH



CONCEPT PRO
AHD RECORDING
RANGE

AIR8025EL-AHD2M-Z

Concept Pro Lite 2MP 4-in-1 Analogue
Motorised External Bullet Camera

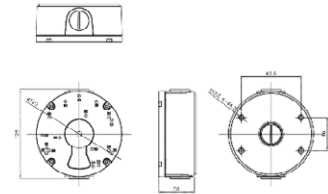
Concept Pro

ACCESSORIES

DIMENSIONS

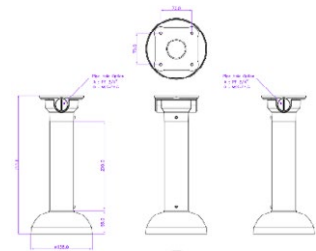
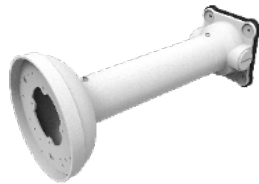
CP-BASE-1-V2-G

Concept Pro Small
Junction Box



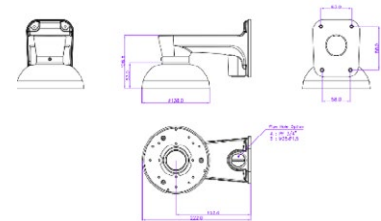
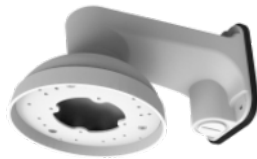
CP-PM-1-V2-G

Concept Pro Small
Pendant Mount



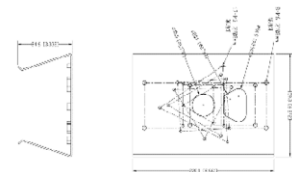
CP-WM-1-V2-G

Concept Pro Small
Wall Mount



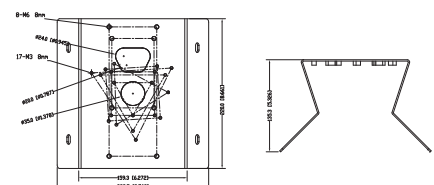
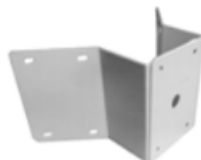
CP-PLM-V2

Concept Pro Pole Mount
(can be combined with
CP-BASE-1-V2)



CP-CM-V2

Concept Pro Corner Mount
(can be combined with
CP-BASE-1-V2)



COMPATIBLE
WITH



CONCEPT PRO
AHD RECORDING
RANGE