

Concept  Pro

# PRODUCT BROCHURE

New ranges including:

**ColourSmart**



# CONTENTS

|                               |    |
|-------------------------------|----|
| Concept Pro values            | 2  |
| Concept Pro features          | 3  |
| ColourSmart                   | 4  |
| Deep Learning video analytics | 6  |
| Deep Learning Plus            | 7  |
| Cyber security                | 8  |
| User interface                | 8  |
| Storage reduction             | 9  |
| Search and playback           | 10 |
| Remote monitoring             | 12 |
| Video management              | 14 |
| Mobile applications           | 15 |

## PRODUCTS

|                           |    |
|---------------------------|----|
| NEW products              | 16 |
| Cameras                   | 18 |
| Bracket matrix            | 30 |
| Recorders                 | 32 |
| Monitors                  | 38 |
| Intruder                  | 40 |
| Detection                 | 41 |
| Accessories               | 42 |
| Demonstrations & training | 44 |

# WHY CONCEPT PRO?

## Consistent user experience & design

Consistent design across all platforms.

Consistent camera housings.

Minimal training required.



## Extensive warranties

Five years on cameras. Three years on PTZ and recorders. Two years on monitors.



## Consistent and unique

Backward compatible. Ideal for legacy installs. High quality components.

Tried and tested. Sustainable and evolving.



## Trusted brand

Exclusive to Videcon with price protection.

A great British brand. Built on loyalty and trust.



Order before 5:30pm for UK mainland delivery to you the next working day, guaranteed.



Compare us to your current supplier and see the benefits of choosing Concept Pro.

Call Videcon on: **01924 528000**  
or Email: [sales@videcon.co.uk](mailto:sales@videcon.co.uk)



### DID YOU KNOW!

We pre-build & test all recorders for 24 hours before shipping them to you to ensure reliability!

# Concept Pro

## ABOUT CONCEPT PRO

Launched in 1998 and renowned across the industry for its quality, the Concept Pro brand encompasses all areas of CCTV. Continually evolving and manufactured to our specific design, each Concept Pro product specification is influenced by feedback and input from our customer base.

Videcon are committed to cyber security and meeting the ever-changing requirements of the security industry.

Our flagship Great British CCTV brand, Concept Pro, is developed in the UK and manufactured using South Korean technology. All new Concept Pro cameras are NDAA compliant and we remain committed to ensuring there is a complete range of NDAA compliant products in the Concept Pro range.

Concept Pro utilises Deep Learning, which radically advances false alarm filtering by accurately and reliably identifying people and vehicles, ensuring you receive only the events that matter. With a full suite of CCTV equipment available in both AHD and IP, a complete range of camera

styles and resolutions, a full suite of recording devices and a wide range of monitors, there's a Concept Pro product to suit every installation.

Consistency is at the heart of our ethos. Our user interface has remained largely unchanged, so remains familiar and is only updated to add new features. Backwards compatibility and consistency in product design across the range has resulted in a range of products that require minimal training, ensuring installers can carry out any Concept Pro installation with confidence and familiarity.

Only the highest quality components are used in Concept Pro products with a rigorous product testing procedure behind any product release. For these reasons, we are proud to stand by a full five year warranty on all Concept Pro static cameras and three year warranty on all recorders and PTZ cameras. With a great variety of products, interoperability across the range and consistent product development, Concept Pro is the CCTV brand you can trust.

## CONCEPT PRO FEATURES

**Concept Pro** boasts a rich feature set designed to meet the requirements for professional level installations that require sustainable solutions. Our solutions have been installed in thousands of sites covering multiple sectors from agriculture, commercial, education, industrial, critical infrastructure, retail, leisure and many more.

This catalogue describes just a few of the areas we focus on that make **Concept Pro** the trusted brand for professional level installations

- ◆ False alarm filtering
- ◆ Deep Learning
- ◆ Cyber security
- ◆ Consistent user interface
- ◆ Storage reduction
- ◆ Search and playback
- ◆ Remote monitoring
- ◆ Video management system
- ◆ Mobile applications
- ◆ Business intelligence

# ColourSmart

## 24/7 FULL COLOUR



# CRYSTAL CLEAR IMAGES NIGHT & DAY



## Concept Pro 5MP IP ColourSmart Deep Learning External Turret Camera

The CVP9316DLCS-IP5M/2.8 model is a professional IP camera designed to provide high quality, full colour images in demanding external environments. This weather resistant external turret features a 2.8mm fixed lens with F1.0 super aperture iris, warm light LEDs with 20m illumination range, and can provide crisp 5-megapixel images with excellent colour accuracy. It also comes equipped with a full suite of Deep Learning video analytics features to reduce false alarms, as well as traditional alarm and audio inputs/outputs. This camera is designed for excellent compatibility with the Concept Pro range of network video recorders.



### Colour Smart: 24/7 Full Colour Performance

This model combines an enhanced low light image sensor, F1.0 super aperture iris-equipped lens, and built-in warm light LEDs with 20m illumination range to provide 24/7 colour video monitoring. The image sensor and lens allow for greater light capture in environments with ambient light. When ambient light is not sufficient for superior colour imaging, the built-in warm light LEDs automatically turn on to continue providing excellent video with true colour accuracy. In addition, an intelligent anti-overexposure algorithm is used to automatically adjust supplemental lighting levels depending on the environment and how close moving objects are to the camera, ensuring object details are visible even when moving closer to the camera.

### Deep Learning Video Analytics

Reduce false motion detection alarms by up to 95% using new Deep Learning technology. Trained with powerful deep learning algorithms, the camera can detect and classify humans, cars, and bicycles based upon specific line/zone and timing criteria. As a result, false alarms from sources such as lights, animals, foliage, weather, and other objects are effectively filtered and reduced. Additionally, this camera supports Deep Learning Motion Detection with human classification to reduce false alarms on traditional motion detection events.

**DEEP  
LEARNING**

## KEY FEATURES

- ◆ Max. 25FPS @ 5MP
- ◆ 2.8mm Fixed Lens
- ◆ F1.0 Super Aperture
- ◆ 24/7 Full Colour Image
- ◆ Warm Light Illumination
- ◆ Deep Learning Video Analytics
- ◆ Deep Learning Motion Detection
- ◆ Alarm & Audio I/O

## OTHER FEATURES

- ◆ PoE/DC12V Power Input
- ◆ True WDR, ATW, BLC, Defog, 3D-DNR
- ◆ VBR+ Smart Bit Rate Control & ROI
- ◆ ONVIF Profile S Compliant
- ◆ IP66-rated

# DEEP LEARNING

## WHAT IS DEEP LEARNING?

Deep Learning radically advances false alarm filtering by accurately and reliably identifying people and vehicles, ensuring you **receive only the events that matter**.

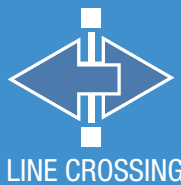
Deep Learning provides a much improved approach to filtering out false alarms over motion detection and traditional video analytics. Unlike these methods that simply look for changes in pixel values, Deep Learning

utilises multi-layer neural networks of algorithms to effectively learn what an object is.

It then uses pixel values, edges, vector shapes and a host of other visual elements to recognise the objects.

The result is a system that will alarm only when an object of interest is in view, with vastly superior accuracy than traditional video analytics.

### ANALYTIC RULES AVAILABLE (ALL WITH OBJECT COUNTER OPTION)



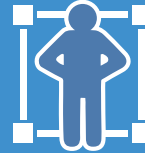
LINE CROSSING



REGION ENTER



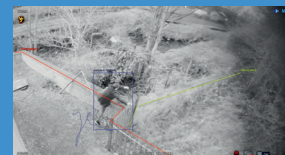
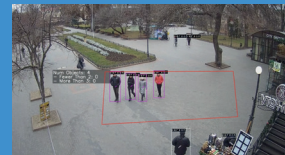
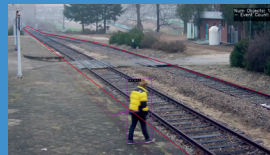
REGION EXIT



AREA ENTRY AND STOP



LOITERING



# DEEP LEARNING PLUS

## WHAT IS DEEP LEARNING PLUS?

Deep Learning PLUS is an exciting, immensely powerful expansion device available in either 4, 8 or 16 channel options. Deep Learning Plus provides outstanding detection at distance and speed and lets you add multiple detection and tracking rules to all activated channels.

Deep Learning Plus unleashes the full potential of Deep Learning and rivals leading VMS platforms for analytics capabilities.

Built with the installer in mind, Deep Learning Plus is configurable to meet the requirements of even the most complicated sites.

Event areas can be defined with free drawn shapes to perfectly match the environment and a host of false alarm reduction features can be activated to further reduce any false alarms.

Put simply with Deep Learning Plus you can have peace of mind you will receive only the events that matter.

Available in 3 modes, **Companion mode** is the easiest way to set up Deep Learning with complete integration with selected Concept Pro recorders. All the set up and event searching is done through the recorders user interface.

**Universal mode** allows for more advanced features and customisation of rules. These features can be accessed by utilising the Deep Learning Plus web browser set up.

**Event server mode** is a powerful method for providing Deep Learning analysis to any device with RTSP streams; this should cover most existing installations in the UK and provides all the detection and analytical features of universal mode.

## Example rules



Restricted area protection with time limits



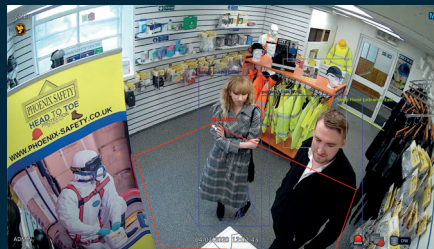
Accurate detection at high speeds



Outstanding recognition at distance



Multiple rules on any channel for complex sites



Queue level management and retail entry



Site security and perimeter control

# CYBER SECURITY

## WELCOME TO SEQRINET - LEADING THE WAY IN CYBER SECURITY

### Enhanced Password Control

Installers have the option of Securinet on their recorder systems and Enhanced Password Control (EPC). This will prohibit the use of '1234' and other easily infiltrated passwords and only allow the use of strong passwords.

In addition, all Concept Pro recorders compatible with Securinet do not have any backdoor user capabilities and have certain sensitive features, such as P2P, DDNS, and audio, turned off by default.

Compatibility for organisations requiring a more stringent level of password protection is essential and it is this compatibility that makes the Concept Pro recording devices the most secure in the market and suitable for use in government, public space and banks to name but a few.

Enhanced Password Control provides interoperability and the potential for use in a variety of situations, ensuring that Securinet is one of the most secure network products available on the market today.

### P2P European Servers

All Concept Pro network video and analogue high definition recorders use secure European based servers to ensure the highest level of protection. We work closely with our customers working with government bodies and private organisations to ensure that all customer data is secure and without the risk of third party access, ensuring complete peace of mind.

P2P networking makes it simple for installers to configure mobile viewing of the Concept Pro recorders on smartphones and tablets. Installers simply activate mobile viewing by scanning the QR code on the unit into the Concept Pro app (available for Android and iOS devices free of charge) connecting through the server straight to the NVR.

#### Benefits of using secure European servers & P2P include:

- Peace of mind - all data is secure
- Quick & easy set-up
- Simple one touch access
- Standard feature on the AHD & HD-IP Concept Pro recording range

# CONSISTENT USER INTERFACE A BRILLIANTLY SIMPLE INTERFACE

NO MATTER WHAT THE PLATFORM, ON SCREEN OPERATION OF CONCEPT PRO RECORDERS STAYS THE SAME

A single, brilliant Graphical User Interface (GUI) features on both the VXH5AHD and the VUHDIP ranges of recorders, making it a seamless transition between platforms.

Users of previous models will feel instantly at home with the on-screen menus on our recorders, with the same design, layout and structure that has been refined to work perfectly in HD resolutions.

Installers can continue with existing roll-outs with no changes or disruptions to their setup process.





# STORAGE REDUCTION

## OPTIMISING VIDEO FOR IMAGE QUALITY AND STORAGE REQUIREMENTS

All Concept Pro cameras & recorders come with features designed to help to balance the need for high quality images and lower storage requirements. Selecting the proper settings for each camera can help optimise your system and balance image quality with storage requirements.



### Constant Bit Rate

Constant Bit Rate (CBR) applies a specific bit rate for the video stream as a result, the image quality will appear improved, but bandwidth and storage requirements will be high.



### Variable Bit Rate

Variable Bit Rate (VBR) automatically adjusts the bit rate according to the scene being monitored. Image quality will decrease when there is less motion and increase when complexity increases. Bandwidth and storage requirements can be considerably reduced.



### VBR+

VBR+ is a more intelligent video processing feature that can more aggressively apply techniques to dramatically reduce the bit rate by only focusing optimal image quality according to scene complexity.



### Regions of Interest

Regions of interest can be set with the area denoted 'of interest' or 'not of interest'. According to the setting, the camera will apply optimal image quality to the area and low image quality to outside areas to help reduce bit rate further.



### Smart Storage Compression

Smart Storage Compression (SSC) will reduce the maximum bit rate to 4Mbps for the main stream and 1Mbps for the sub stream. It will also automatically adjust the max bit rate according to the record FPS setting. SSC attempts to balance image quality with frame rate to save bandwidth and storage.



### H.265

H.265 is a new video compression codec that allows for more optimal compression of video streams compared to the H.264 video codec. When combined with VBR, this can result in a considerable reduction in bit rate compared to H.264 without a major trade off in image quality.



Did you know.. All of our Concept Pro recorders have WD Purple Surveillance HDD's rigorously tested and installed as standard?

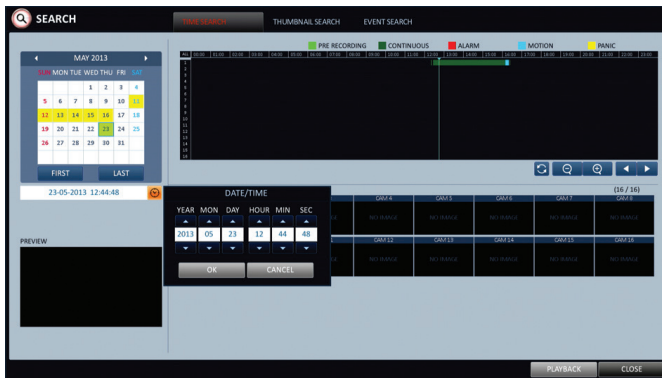
# SEARCH & PLAYBACK

## SEARCHING THROUGH FOOTAGE COULDN'T BE EASIER WITH CONCEPT PRO

All Concept Pro recorders are designed with the same Graphical User Interface (GUI) on IP and AHD, so on large multi camera installations, or smaller domestic ones, the search and playback is consistent throughout Concept Pro.

Easily search through your recorded footage saved on the internal hard disk by date, time, thumbnail or event log.

### DATE & TIME SEARCH

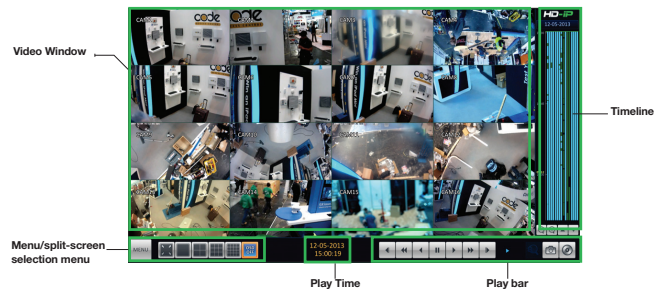
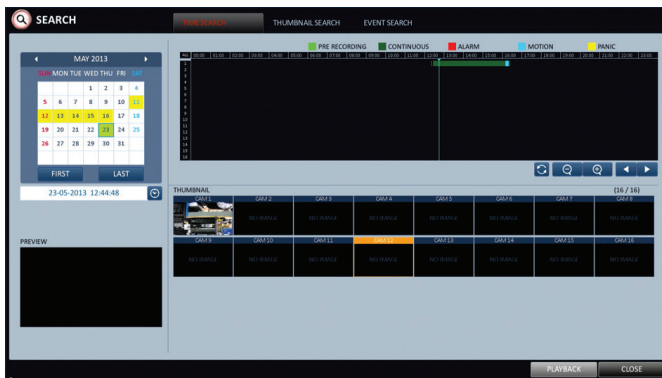


You can search for specific dates and times easily on all Concept Pro recorders in exactly the same way. To access this feature you will need to open the search menu and select TIME SEARCH.

You can select your date from the calendar view and will then have the option to select the time you want to view, down to the second. An extremely useful feature if you know exactly when an event occurred.

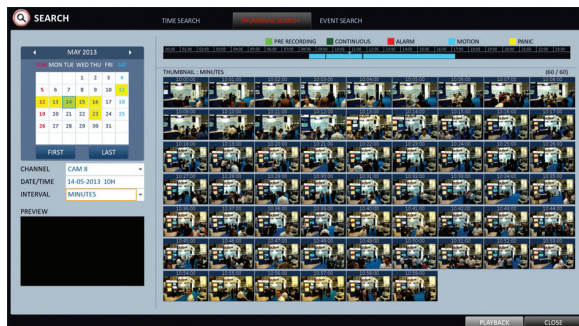
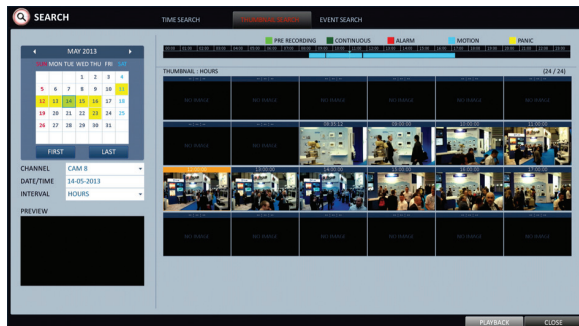
In addition to this, you can also click anywhere on the timeline and immediately go to that time and view the footage. The timeline is colour coded to help you identify events, motion or panic recording, which makes identifying and viewing alarm triggers or motion much easier.

- **Bright Green:** Pre-recording
- **Green:** Continuous recording
- **Blue:** Motion recording
- **Red:** Alarm recording
- **Yellow:** Panic recording



# SEARCH & PLAYBACK

## THUMBNAIL SEARCH



Searching footage by using the thumbnail search can greatly improve identification of events you wish to review. As the name suggests, you have a thumbnail image to preview any incidents or events caught on camera.

Save time by quickly scanning a list of thumbnails on a given channel by day, hour or minute. This is made even easier with the intuitive way Concept Pro recorders react to your selection. Clicking on an 'hour' thumbnail will automatically change the view to the 'minute' view. This greatly increases the speed of finding any event you may be looking for.

To play any of these thumbnails, it's as easy as double clicking them and the recorder will enter into playback mode.

If this isn't the event you wanted to view, just hit 'escape' and you will return to the thumbnail view to continue your search.

Concept Pro is committed to keeping the GUI consistent, so once you are familiar with the interface, you're familiar with it across ALL Concept Pro recorders. We don't change the way the GUI looks or works unless it is to add features, so you only need to learn it once.

## EVENT LOG SEARCH



Searching for events is just as simple on Concept Pro recorders.

Selecting event search on the top tab will bring up the familiar date and time selection for your search and below is a list of all the events that you can filter.

This greatly aids your searching capabilities and you will have a list of events with a description to identify them.

Again, to play any of these events returned in the search, just double click and that footage will now play.

# REMOTE MONITORING

Every Concept Pro recorder provides the opportunity for you as an installer to take advantage of one of the fastest growing areas of the security market to your customers.

Not only are you offering a CCTV system, but a cost-effective monitoring solution for your customers' entire premises.

- Immix and Sentinel compatible
- Easy to setup
- 9 Years of remote monitoring experience
- Fastest growing area of CCTV
- Intruder detection with remote monitoring

**Sentinel** *immix*<sup>®</sup>  
by SureView  
systems



# REMOTE MONITORING

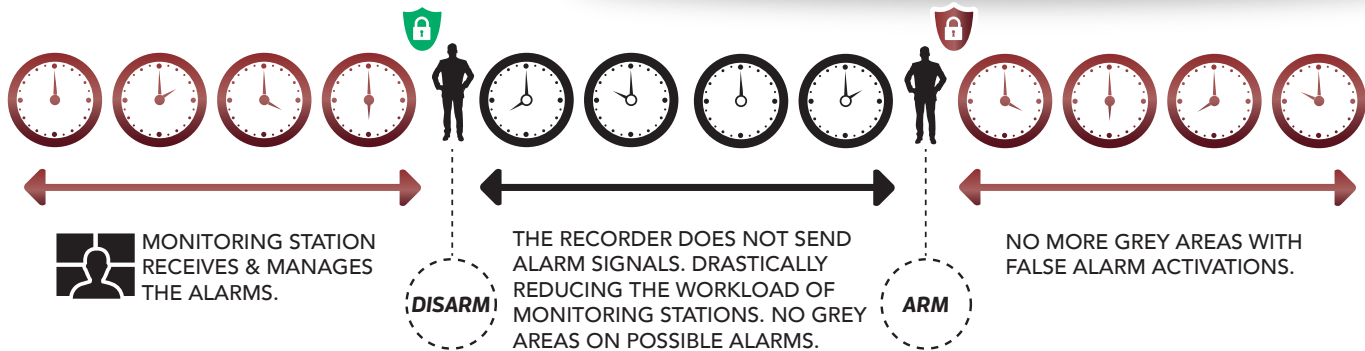
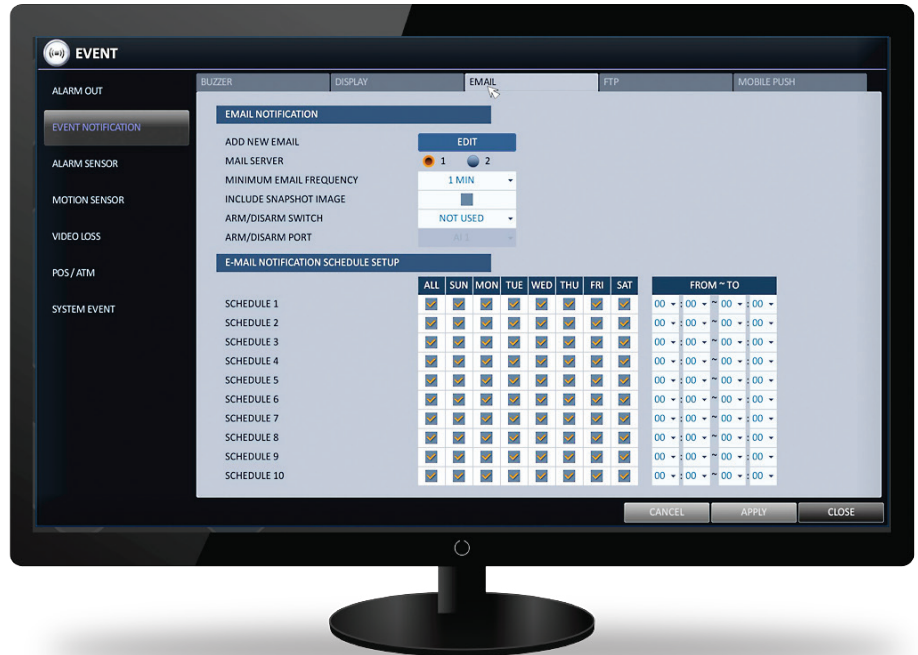
## Remote Monitoring with Arm/Disarm

Remote monitoring is a simple and effective way to enhance any Concept Pro recording system, giving your customers the peace of mind of 24-hour-a-day and surveillance at a fraction of the cost of manned guarding.

**Manage alarm scheduling and programming like you have never seen before.**

**The Arm/Disarm feature promises to dramatically improve the working efficiency of monitoring stations whilst drastically reducing the workload of CCTV monitoring staff.**

Arm/Disarm allows for a more methodical monitoring approach through a few simple measures. Through the addition of alarm connectors to the recorder that are configurable through key-switches, a system can be armed or disarmed at times set by a user which will free up server space and diminish the number of false alarms coming through. Users are now able to simply disarm their system at busier times when false alarms are most likely to come through.



# VIDEO MANAGEMENT SYSTEM

Free, high quality video management software  
 Maximum surveillance, minimum hassle

# iPims



**“iPims, like our new recorders, has been designed with the user in mind”**

The FREE iPims client software enables installers to connect multiple analogue and IP recorders, individual IP cameras and other external detection equipment together over a network or internet to a single PC. Perfect when monitoring large or multiple sites with a high number of cameras.

Compatible with all Concept Pro recorders, iPims gives users PTZ control of high speed dome cameras, two-way audio and alarm notifications.

**Want to learn more about iPims?**

Our knowledgeable field sales representatives are located throughout the UK and provide free product demonstrations and ongoing support and assistance.

- Compatible across all Concept Pro recorders
- Up to 256 recording devices & 4096 cameras in one
- Multi-user support
- Drag & drop camera views
- Camera pop-up on Emap when motions/alarm triggers
- Alarm handling including motion detect screen pop up
- Image carousels
- Accessory support
- Multi-monitor support
- Multi event search
- User defined permissions
- Remote HDD status indicator
- Full remote device setup

# MOBILE APPLICATIONS

## Concept Pro mobile application

Secure European servers & P2P



Remotely control doors, lights, gates, PA systems, SMS notifications and more via the in-app alarm notifications

With our Concept Pro Viewer, we have developed alarm response functions, allowing you to remotely override the systems you decide you need to control.

Users have the ability to trigger DVR/NVR alarm outputs remotely from their mobile, meaning a user can identify an intruder remotely on their viewing app and have complete jurisdiction over their response to this. The versatility of alarm outputs is without a doubt the biggest asset of this feature. Alarm outputs can be connected to a plethora of applications in a system including doors, gate and PA Systems, which can all be triggered remotely and individually allowing you to choose your response to a situation.



### Live mobile recording

Users can record directly from the app to their smartphone video library.



### Live monitoring & playback

Users can monitor and interrogate both live and pre-existing footage directly from our app.



### PTZ control

All High Speed Dome cameras that are compatible with our recorders are controllable directly through our mobile application



### Alarm Output Trigger

Alarm Output Trigger lets users trigger alarm responses such as audio to a site or door closing remotely, ensuring sites can be kept secure at all times



### Two-way audio

This feature ensures users can listen into a site and also direct audio based orders into a site to dissuade intruders or provide instruction to people on a site.



### Customisable interface

The apps display interface can be customised to best suit a location, for example sites with multiple cameras can setup a multi-feed display and sites with singular cameras are able to view single feeds.

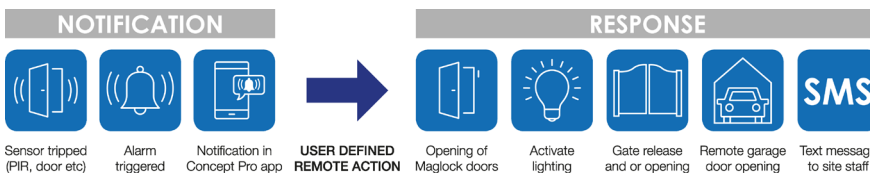


### Push notifications

Push notifications are directly configurable from our app, ensuring that users are alerted instantly when issues arise.



Available from the App Store and on Google Play



# A NEW RANGE OF CONCEPT PRO CAMERAS

**Concept Pro will be releasing many new IP and AHD cameras over the coming months.**

We've listened to your feedback and have made a host of improvements to improve the ease of installation whilst significantly advancing IP capability on the Concept Pro range including a suite of new functionality and enhanced features

All cameras in the new range are NDAA compliant with enhanced low light. Our IP cameras also include Deep Learning capabilities as standard.

The new range also contains our ColourSmart range of cameras with outstanding 24/7 colour images

Ask us about our three-part video series explaining all the changes and how these will benefit you and your customers!

The following pages detail the products available at the time of printing. Look out for some of the new cameras in this brochure and subscribe to us on social media to get notified of each exciting launch that we do.

Some of the new features are mentioned on the next page.

## NEW TURRET CAMERAS



## NEW EYEBALL CAMERAS



## NEW COMPACT DOMES



## NEW VANDAL DOMES



## NEW SMALL BULLET CAMERAS



## NEW LARGE BULLET CAMERAS





## DEEP LEARNING MOTION DETECTION FOR ALL CONCEPT PRO IP CAMERAS:

Reduce false alarms on traditional motion detection events by up to 95% with the power of Deep Learning. Draw custom-sized motion detection areas, select whether to target human/car/bike objects, and configure custom sensitivity settings for each object class.

## NDAA-COMPLIANT:

Videcon are committed to cyber security and meeting the ever-changing requirements of the security industry. Our flagship Great British CCTV brand, Concept Pro, is developed in the UK and manufactured using South Korean technology. We remain committed to ensuring there is a complete range of NDAA compliant products in the Concept Pro range.

## ENHANCED COMPATIBILITY:

We have deepened the integration between our IP Cameras and NVRs to broaden the interoperability. This ensures all the advanced features you see here are available to set up through the NVR using our highly regarded user interface. This improved interoperability allows for enhanced functionality, such as the ability to transmit audio from NVR, audio input to the camera audio output, as well as a wider range of set up options. These include image settings such as white balance control, exposure settings such as backlight compensation, shutter speed and IR settings as well as setting up region of interest.

Get in touch with our team to talk through the full details on what features are now configurable through the Concept Pro recorders.

## DEEP LEARNING VIDEO ANALYTICS:

For even greater object detection capabilities, the 8-megapixel IP camera supports a suite of powerful Deep Learning video analytics that can be configured, detected, and searched from compatible Concept Pro network video recorders such as the VUHDIP-V2 range.

Like Deep Learning Plus, users may target human/car/bike objects and track these objects using intrusion, line crossing, region enter/exit, loitering, stopping, and counter detection rules.

Detected objects automatically appear in the NVR Deep Learning event timeline and can be configured to trigger analytics event notifications. DL events can be searched and filtered for quick reference. Camera models with 'DL' in the model name support this feature.

## ENHANCED LOW LIGHT PERFORMANCE FOR ALL CONCEPT PRO CAMERAS:

All Concept Pro cameras are equipped with advanced CMOS image sensors that provide enhanced low light performance.

This results in better colour reproduction and image detail in scenes with low light levels and depending on the ambient light levels may result in longer colour video monitoring times.

# EYEBALL CAMERAS



|  |  |                                 |  |
|--|--|---------------------------------|--|
| <p>POWER AUXILIARY<br/><b>DEVICES</b><br/>DC12V OUTPUT</p> | <br><p>CONCEALED<br/>CABLES</p> | <p><b>DEEP<br/>LEARNING</b></p> | <br><p>VANDAL<br/>RESISTANT<br/>HOUSING</p> |
| <p>MOTORISED<br/><b>290M</b></p>                           |  |                                 | <br><p>WHITE &amp; GREY<br/>AVAILABLE</p>   |

 **2MP**



**AHD LITE**

CVP9328DNIR-AHD2M/AHD2M-G

- 2MP AHD
- FOV: H: 90° V: 35°
- 4 in 1
- 2.8-12mm Varifocal Lens

**2MP**



**IP LITE**

CVP9328DNIR-IP2M-Z

- 2MP IP
- FOV: H: 105° V: 28°
- 2.7-13.5mm Motorised Lens

**2MP**



**IP PROFESSIONAL**

CVP9328DNIRLL-IP2M-Z

- 2MP IP
- Enhanced Low Light
- FOV: H: 105° V: 35°
- 2.7-12mm Motorised Lens
- Alarm & Audio I/O

 **5MP NEW**



**AHD PROFESSIONAL**

CVP9329IREL-AHD5M-G

- 5MP AHD
- FOV: H: 107.8° V: 57.22°
- 2.7-13.5mm Varifocal Lens
- 4 in 1
- Dual Power Input

 **5MP NEW**



**IP PROFESSIONAL**

CVP9329DEIREL-IP5M-Z-Z-G

- 5MP IP
- FOV: H: 95.9-29.8° V: 67.3-22.3°
- 2.8-12mm Motorised Lens
- Alarm & Audio I/O
- DC12V Power Output
- Deep Learning Motion Detection

 **8MP NEW**



**IP PROFESSIONAL**

CVP9329DLIREL-IP8M-Z-Z-G

- 8MP IP
- FOV: H: 94.9-28.5° V: 86.2-17.6°
- 2.7-13.5mm Motorised Lens
- Alarm & Audio I/O
- DC12V Power Output
- Deep Learning Analytics

# TURRET CAMERAS



|                         |  |                      |                                   |
|-------------------------|--|----------------------|-----------------------------------|
| <b>FIXED LENS</b>       | <b>Colour Smart</b><br>24/7 FULL COLOUR IMAGES NIGHT & DAY | <b>DEEP LEARNING</b> | <b>VANDAL RESISTANT HOUSING</b>   |
| <b>CONCEALED CABLES</b> |  |                      | <b>WHITE &amp; GREY AVAILABLE</b> |

**2MP**



**AHD PROFESSIONAL**

**CVP9315DNIR-AHD2M/2.8**

- 2MP AHD
- FOV: 90°
- 4 in 1
- 2.8mm Fixed Lens
- True WDR

**5MP**



**AHD PROFESSIONAL**

**CVP9316IREL-AHD5M/2.8 /G/2.8**

- 5MP AHD
- FOV: H: 104°, V: 76°
- 4 in 1
- 2.8mm Fixed Lens
- True WDR

**5MP**



**NEW**



**IP PROFESSIONAL**

**CVP9316DEIREL-IP5M/2.8 /G-2.8**

- 5MP IP
- FOV: H: 101.8°, V: 74.6°
- Enhanced Low Light
- 2.8mm Fixed Lens
- Deep Learning Motion Detection

**2MP**



**IP PROFESSIONAL**

**CVP9315DNIRLL-IP2M/2.8**

- 2MP IP
- FOV: H: 107.58°, V: 57.64°
- Enhanced Low Light
- 2.8mm Fixed Lens
- Alarm & Audio I/O



**5MP**

**NEW**



**IP PROFESSIONAL**

**CVP9316DEIREL-IP5M-Z**

- 5MP IP
- FOV: H: 102.8° V: 74.1
- 2.8-8mm Motorised Zoom Lens
- Alarm & Audio I/O
- True WDR

**8MP**



**IP PROFESSIONAL**

**CVP9315DNIR-IP8M/2.8 /G/2.8**

- 8MP IP
- FOV: 102°
- 2.8mm Fixed Lens
- Alarm & Audio I/O



**5MP**



**NEW**



**IP PROFESSIONAL**

**CVP9316DLCS-IP5M/2.8 /G2.8**

- 5MP IP
- 2.8mm Fixed Lens
- F1.0 Super Aperture
- 24/7 Full Colour Image
- 20m Warm Light Illumination
- Deep Learning Video Analytics
- Alarm & Audio I/O



**5MP**



**NEW**



**IP PROFESSIONAL**

**CVP9316DEIREL-IP5M-Z**

- 5MP IP
- FOV: H: 102.8°, V: 74.1°
- Enhanced Low Light
- 2.8-8mm Motorised Lens
- Deep Learning Motion Detection

# SMALL BULLET CAMERAS



**Colour Smart**  
24/7 FULL COLOUR IMAGES NIGHT & DAY

**SINGLE BOLT TRI-AXIS BRACKET**

**DEEP LEARNING**

**VANDAL RESISTANT METAL HOUSING**



**2MP NEW**



**AHD LITE**

AIR3525EL-AHD2M/2.8

- 2MP AHD
- FOV: H: 113.74° V: 61.5° D: 134.45°
- 4 in 1
- 2.8mm Fixed Lens
- True WDR

**2MP**



**IP LITE**

AIR2024-IP2M/2.8

- 2MP IP
- FOV: 105°
- 2.8mm Fixed Lens



**5MP NEW**



**AHD PROFESSIONAL**

AIR3525EL-AHD5M/2.8

- 5MP AHD
- FOV: H: 113.74° V: 61.5° D: 134.45°
- 4 in 1
- 2.8mm Fixed Lens
- True WDR

**4MP**



**IP PROFESSIONAL**

AIR2024-IP4M/2.8

- 4MP IP
- FOV: 105°
- 2.8mm Fixed Lens



**5MP NEW**



**IP PROFESSIONAL**

AIR3525DEEL-IP5M-Z

- 5MP IP
- FOV: H: 102.8-50.0° V: 74.1-37.4° D: 142.5-62.5°
- 2.8-8mm Motorised Zoom Lens
- Deep Learning motion detection



**5MP NEW**



**IP PROFESSIONAL**

W

- 8MP IP
- FOV: H: 106.8° V: 55.3°
- 2.8mm Fixed Lens
- Colour Smart
- Deep learning motion detection

**8MP**



**IP PROFESSIONAL**

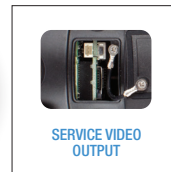
AIR2024-IP8M/2.8

- 8MP IP
- FOV: 115°
- 2.8mm Fixed Lens

**NEW** Easy Installation - Single Bolt Tri-Axis Bracket

**unlock** to release      **position** set position      **lock** to secure

# MEDIUM BULLET CAMERAS



**2MP**



**AHD LITE**

[AIR3526-AHD2M](#)

- 2MP AHD
- FOV: H: 90° V: 35°
- 4 in 1
- 2.8-12mm Varifocal Lens

**2MP**



**IP PROFESSIONAL**

[AIR3526LL-IP2M-Z](#)

- 2MP IP
- Enhanced Low Light
- FOV: H: 105° V: 32°
- 2.7-12mm Motorised Zoom Lens

# LARGE BULLET CAMERAS



SERVICE VIDEO OUTPUT



SINGLE BOLT TRI-AXIS BRACKET



VANDAL RESISTANT METAL HOUSING



NDA  
Compliant

2MP



NUMBER PLATE CAPTURE

AHD LITE/PROFESSIONAL

AIR4528/IRH-AHD\*2M-Z

- 2MP AHD
- FOV: H: 100° V: 35°/H: 89° V: 35°
- 4 in 1
- 2.8-12mm Motorised Lens
- \*Pre-Built Bolt on IR Lamps

2MP



AHD PROFESSIONAL

AIR4528NPC-AHD

- 2MP AHD
- Number Plate Capture
- 9-22mm Motorised Lens

4MP



IP PROFESSIONAL

AIR4528-IP4M-Z

- 4MP IP
- FOV: H: 95° V: 35°
- 2.7-12mm Motorised Lens
- Alarm I/O Audio I/O

4MP



NUMBER PLATE CAPTURE

IP PROFESSIONAL

AIR8012-IP4M-Z

- 4MP IP
- FOV: H: 69.7° V: 75.6°
- 4.7-56.4mm Motorised Lens
- Alarm I/O

NDA  
Compliant

2MP



AHD PROFESSIONAL

AIR4529/IRH-AHD

- 2MP AHD
- FOV: H: 89° V: 35°
- Video Transmission over 300m
- 6-22mm Varifocal Lens
- 4 in 1
- \*Pre-Built Bolt on IR Lamps

2MP



AHD PROFESSIONAL

AIR5027-AHD

- 2MP AHD
- FOV: H: 89° V: 35°
- 4 in 1
- 5-50mm Varifocal Lens

5MP

NEW



IP PROFESSIONAL

AIR8025DEEL-IP5M-Z

- 5MP IP
- FOV: H:95.9-29.8°, V:67.3-22.3°, D:123.7-36.51°
- 2.8-12mm Motorised Lens
- Deep Learning Motion Detection

NDA  
Compliant

8MP

NEW



IP PROFESSIONAL

AIR8025DLEL-IP8M-Z

- 8MP IP
- FOV: H:94.9-28.5°, V:86.2-17.6°, D:121.5-33.6°
- 2.7-13.5mm Motorised Lens
- Deep Learning Video Analytics

NDA  
Compliant

5MP

NEW



AHD PROFESSIONAL

AIR8025EL-AHD5M-Z

- 5MP IP
- FOV: H: 108.78°-28.76° V: 57.22°-16.2° D: 130.54°-33°
- 2.7-13.5mm Motorised Lens
- True WDR

NEW

Easy Installation - Single Bolt Tri-Axis Bracket

unlock

to release

position

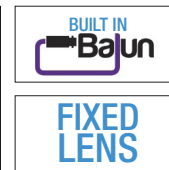
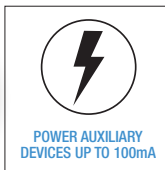
set position

lock

to secure



# COMPACT DOME CAMERAS



2MP



**AHD LITE**

CVP5325DNIR-AHD2M/2.8

- 2MP AHD
- FOV: 102°
- 4 in 1
- 2.8mm Fixed Lens
- Dual Power Input



5MP



**AHD PROFESSIONAL**

CVP5325DNIR-AHD5M/2.8

- 5MP AHD
- FOV: 102°
- 4 in 1
- 2.8mm Fixed Lens
- Dual Power Input



5MP NEW



**IP PROFESSIONAL**

CVP5325DEIREL-IP5M/2.8

- 5MP IP
- Deep Learning Motion Detection
- 2.8mm Fixed Lens
- Intelligent VBR+
- Dual Power Input

# INTERNAL DOME CAMERAS



VANDAL RESISTANT  
METAL HOUSING



INTERNAL CABLE  
CONNECTIONS



DUAL/TRIPPLE  
POWER



2MP



AHD

CBP6325EL-AHD2M

- 2MP AHD
- FOV: H:106°-40°, V:57°-23°, D:110°-45°
- 2.8-12mm Varifocal Lens
- Enhanced Low Light
- DC12V/AC24V Dual Power Input



2MP



AHD

CBP6325IREL-AHD2M

- 2MP AHD
- FOV: H:106°-40°, V:57°-23°, D:110°-45°
- 2.8-12mm Varifocal Lens
- Enhanced Low Light
- DC12V/AC24V Dual Power Input



5MP



AHD

CBP6325IREL-AHD5M

- 5MP AHD
- FOV: H:106°-40°, V:77°-23°, D:112°-49°
- 2.7-13.5mm Varifocal Lens
- Enhanced Low Light
- DC12V/AC24V Dual Power Input

2MP



AHD

CBP6324DNIR-AHD-Z

- 2MP AHD
- FOV: H: 100° V: 35°
- 4 in 1
- 2.8-12mm Motorised Zoom
- Dual Power Input



2MP



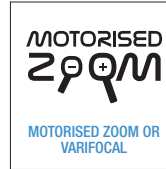
IP

CBP6325DEIREL-IP5M

- 5MP IP
- FOV: H:101.5-29.8°, V:70.8-22.3°, D:132.9-37.5°
- 2.7-13.5mm Manual Varifocal Lens
- Deep Learning Motion Detection
- H.265 Video Codec & VBR+ Smart Bit Rate Control



# EXTERNAL DOME CAMERAS



**2MP**



**AHD**

**CVP9324DN-AHD**

- 2MP AHD
- FOV: H: 90° V: 35°
- 4 in 1
- 2.8-12mm Varifocal Lens
- Dual Power Input



**2MP**

**NEW**



**AHD**

**CVP9325IREL-AHD2M-Z**

- 2MP AHD
- FOV: H: 98° V: 53°
- 4 in 1
- 2.8-12mm Varifocal Lens
- Dual Power Input



**5MP**

**NEW**



**AHD**

**CVP9325IREL-AHD5M-Z**

- 2MP IP
- FOV: H: 104° V: 77°
- 4 in 1
- 2.7-13.5mm Motorised Lens
- Dual Power Input

**4MP**



**IP**

**CVP9324DNIR-IP4M**

- 4MP IP
- FOV: H: 102° V: 32°
- 2.7-13.5mm Varifocal Lens-WH
- 2.8-12mm Varifocal Lens-GR
- Alarm & Audio I/O
- Dual Power Input



**5MP**



**IP**

**CVP9325DEIREL-IP5M-Z**

- 5MP IP
- FOV: H:95.9-29.8°, V:67.3-22.3°, D:123.7-36.51°
- 2.8-12mm Motorised Lens
- Deep Learning Motion Detection
- H.265 Video Codec & VBR+ Smart Bit Rate Control
- Alarm & Audio I/O

# FISHEYE CAMERA

## CBP360-IP12M

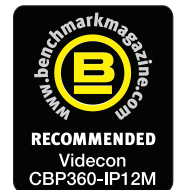
12MP Internal 360° Panoramic  
Camera with PTZ control

### KEY FEATURES

- ◆ 10m IR Distance
- ◆ 0.01 lux (0.0 lux with IR On)
- ◆ Up to 12MP resolution
- ◆ POE
- ◆ Edge storage option - on board recording via Micro SD Card Max. 64GB
- ◆ IK10 and IP66 rated

### OTHER FEATURES

- ◆ Surround 360° view
- ◆ 180° horizontal/vertical
- ◆ 12V DC / 24V AC or PoE
- ◆ True day night with ICR cut filter
- ◆ ONVIF 2.6 (Profile S)
- ◆ Fisheye correction

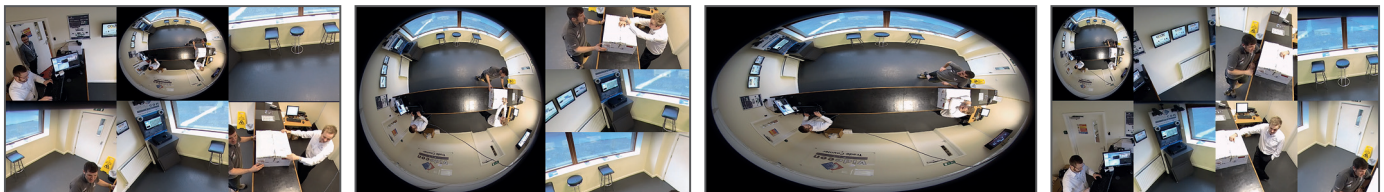


## CONCEPT PRO 12MP IP FISHEYE CAMERA

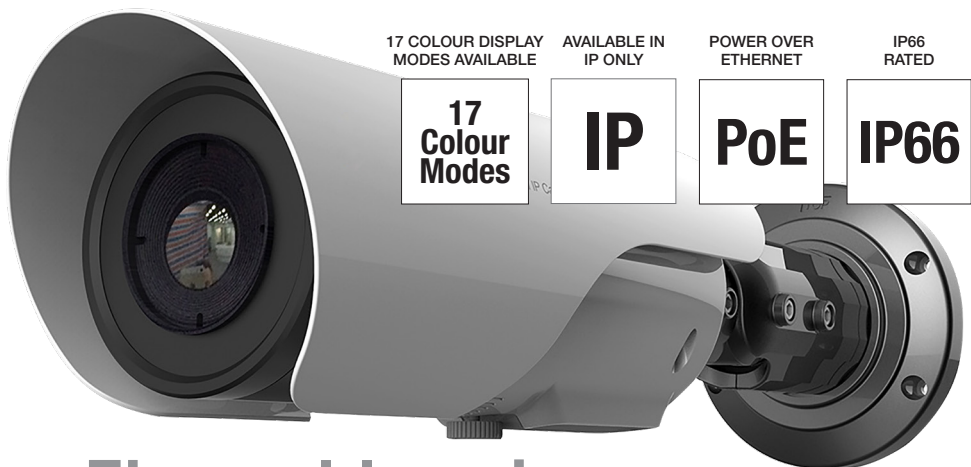
The Concept Pro CBP360-IP is an up to 12MP resolution 360 degree IP fisheye camera with built-in de-warping and 15m IR range. Designed for IP surveillance requirements that need to cover the entirety of a scene but have limited space to install multiple cameras.

From a single ultra-wide angle lens the camera can transmit a 360 degree image of the scene and split it in up to 4 separate images using its virtual PTZ feature.

Compatible with all Concept Pro NVRs, this camera is a cost-effective solution as either a part of a larger IP CCTV system or as a standalone alternative.



# THERMAL CAMERAS



## VCP-42

### IP Thermal Camera Range

- ◆ Supports up to 16 temperature detection areas
- ◆ Supports DVE image enhancement features
- ◆ Uncooled IRFPA microbolometer
- ◆ Audio input & audio output (x1/x1)
- ◆ Supports local Micro SD storage
- ◆ Three-axis rotation bracket adjustable for easy installation adjustment
- ◆ Sensitivity 40mK
- ◆ Up to 17 colour modes

## Thermal Imaging

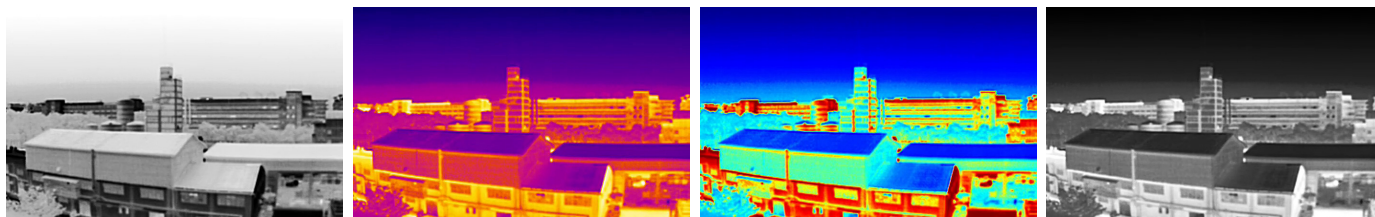
Concept Pro thermal range is great for long range video surveillance and monitoring multiple areas for temperature detection, supporting 17 display modes to highlight temperatures within the scene. Make use of the area temperature detection function where 20 individual areas can be set to detect and alarm based on exceeding a temperature or temperature differences. Making use of thermal detection at night or dark locations provides an alternative in hard to monitor areas where lighting is limited with thermal sensitivity of 40mK. The range of camera also supports 2 alarm inputs and outputs, audio and temperature display.

### Models available

|               |           |              |            |               |
|---------------|-----------|--------------|------------|---------------|
| ◆ VCP-4250-IP | 50mm Lens | 1410m Person | 1470m Fire | 3380m Vehicle |
| ◆ VCP-4235-IP | 35mm Lens | 990m Person  | 1030m Fire | 2370m Vehicle |
| ◆ VCP-4225-IP | 25mm Lens | 700m Person  | 735m Fire  | 1690m Vehicle |
| ◆ VCP-4215-IP | 15mm Lens | 420m Person  | 440m Fire  | 1010m Vehicle |
| ◆ VCP-4208-IP | 8mm Lens  | 220m Person  | 235m Fire  | 540m Vehicle  |

### The Concept Pro VCP-42 Thermal Range offers 17 different colour modes –

Below are examples of Black Hot, Ironbow, Rainbow and White Hot Modes. All 17 modes can be selected to display your thermal footage clearly in different scenarios and includes features such as alarm inputs, privacy masking and internal SD card interface.



### Book a demonstration today! Call us on 01924 528000.

We can come to you anytime, anywhere, ensuring the process for you is as smooth and as stress free as possible.

Our field sales team have extensive knowledge of our entire product range and they will be happy to provide a full demonstration to both you and your customers, at a time and place convenient for you, at no extra cost.

# HIGH SPEED DOMES

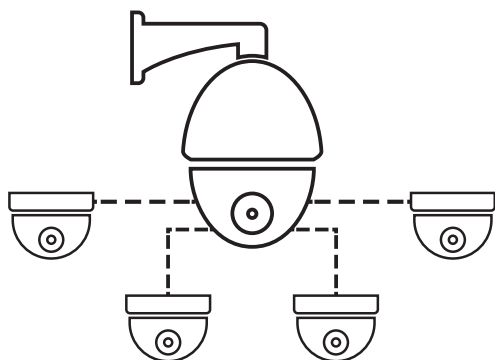


## Concept Pro CP-HSD2 PTZs

### External PTZ Camera Range

The CP-HSD2 range of PTZ cameras are Videcons exciting line of PTZs.

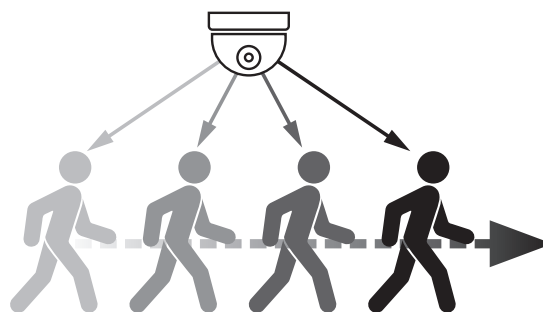
- Available in IP and AHD
- Up to 33X Zoom
- Up to 3MP resolution



#### Deep Learning Plus integration

This means you can use our DL-PLUS' class leading analytics do direct our CP-HSD2 PTZs in combination with static cameras. This ensures you have the highest level of detection accuracy and intruder data.

This ensures the PTZ will always be looking at what matters to you.



#### Deep Learning based auto tracking

This will track a human or vehicle closely ensuring intruders are always in view without any additional kit.

| IP PTZ Model    | Product Description  |
|-----------------|--|
| CP-HSD230-IP2M  | Concept Pro PTZ, Auto Tracking High Speed Dome 30X Zoom. IR, 1080P, Enhanced Low Light IP. 24V AC Power.     |
| CP-HSD230-IP3M  | Concept Pro PTZ, Auto Tracking High Speed Dome 30X Zoom. IR, 3MP, Enhanced Low Light IP. Included POE Power. |
| AHD PTZ Model   | Product Description  |
| CP-HSD210-AHD2M | Concept Pro PTZ, High Speed Dome 10X Zoom. NON-IR, 1080P, Enhanced Low Light AHD. 24V AC Power.              |
| CP-HSD220-AHD2M | Concept Pro PTZ, High Speed Dome 20X Zoom. IR, 1080P, Enhanced Low Light AHD. 24V DC Power.                  |
| CP-HSD233-AHD2M | Concept Pro PTZ, High Speed Dome 33X Zoom. IR, 1080P, Enhanced Low Light AHD. 24V DC Power.                  |

# HIGH SPEED DOMES



**IP** **2MP**  
**CP-HSD230-IP2M**

- 2MP Resolution
- 30X Optical Zoom
- 4.5 - 135mm lens
- Intelligent Auto Tracking Functionality
- Deep Learning Analytics
- Enhanced Low Light Capability
- 200M IR
- 7 Alarm Inputs
- 2 Alarm Outputs
- POE ++ Power Capable
- RS485 and IP Telemetry
- AC24V PSU included



**IP** **3MP**  
**CP-HSD230-IP3M**

- 3MP Resolution
- 30X Optical Zoom
- 4.5 - 135mm lens
- Intelligent Auto Tracking Functionality
- Deep Learning Analytics
- Enhanced Low Light Capability
- 200M IR
- 7 Alarm Inputs
- 2 Alarm Outputs
- RS485 and IP Telemetry
- POE ++ Power Injector Included



**AHD** **2MP**  
**CP-HSD210-AHD2M**

- 2MP Resolution
- 10X Optical Zoom
- 5.1 - 51mm lens
- Enhanced Low Light Capability
- AHD/TVI/CVI/CVBS 4 in 1 camera
- 4 Alarm Inputs
- 1 Alarm Outputs
- DC12V Power
- Coaxitron and RS485 Telemetry
- IP65



**AHD** **2MP**  
**CP-HSD233-AHD2M**

- 2MP Resolution
- 33X Optical Zoom
- 4.7 - 152mm lens
- Enhanced Low Light Capability
- 150m Advanced Infrared Technology
- AHD/TVI/CVI/CVBS 4 in 1 camera
- 4 Alarm Inputs
- 1 Alarm Outputs
- DC24V Power (not compatible with previous generation Power Supplies)
- Coaxitron and RS485 Telemetry
- IP66

## BRACKETS

**CP-HSDB2-WM**  
Concept Pro Wall Bracket (included)  
BRACKET Wall Mount for the 20X, 30X and 33X CPHSD2 range of PTZs



**CP-HSDB2-JB**  
Concept Pro Junction Box  
BRACKET Junction Box for the 20X, 30X and 33X CPHSD2 range of PTZs



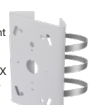
**CP-HSDB2-PM**  
Concept Pro Pendant Mount  
BRACKET Pendant Mount for the 20X, 30X and 33X CPHSD2 range of PTZs



**CP-HSDB2-SN**  
Concept Pro Swan Neck Bracket  
BRACKET Swan Neck for the 20X, 30X and 33X CPHSD2 range of PTZs



**CP-HSDB2-P**  
Concept Pro Pole Mount  
BRACKET Pole Mount for the 20X, 30X and 33X CPHSD2 range of PTZs



**CP-HSDB2-CM**  
Concept Pro Corner Mount  
BRACKET Corner Mount for the 20X, 30X and 33X CPHSD2 range of PTZs



**CP-HSDB210-AHD-WM**  
Concept Pro Wall Mount  
BRACKET Wall Mount for the 10X AHD CPHSD2 range of PTZs



**CP-HSDB210-AHD-PM**  
Concept Pro Pendant Mount  
BRACKET Pendant Mount for the 10X AHD CPHSD2 range of PTZs










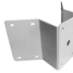










**AHD** **2MP**  
**CP-HSD220-AHD2M**

- 2MP Resolution
- 20X Optical Zoom
- 4.7 - 94mm lens
- Enhanced Low Light Capability
- 150m Advanced Infrared Technology
- AHD/TVI/CVI/CVBS 4 in 1 camera
- 4 Alarm Inputs
- 1 Alarm Outputs
- DC24V Power (not compatible with previous generation Power Supplies)
- Coaxitron and RS485 Telemetry
- IP66











# BRACKET MATRIX

## CONCEPT PRO CAMERAS

|  | In-ceiling Mount  |   | Pendant Mount   |   | Junction Box  |   | Wall Mount   |   | Pole Mount   | Corner Mount  | Rain Cap  |
|--|---|---|---|---|---|---|--|---|--|---|---|
|  | Small   | Large   | Small   | Large   | Small   | Large   | Small  | Large   |  |   |   |
|  | <br>CP-TM-1-V2 | <br>CP-TM-2-V2 | <br>CP-PM-1-V2 | <br>CP-PM-2-V2 | <br>CP-BASE-1-V2 | <br>CP-BASE-2-V2 | <br>CP-WM-1-V2 | <br>CP-WM-2-V2 | <br>CP-PLM-V2 | <br>CP-CM-V2 | <br>CP-RC-V2 |
| <b>CVP5325</b>    | ✓   |   | ✓   |   | ✓   | ✓   | ✓  |   | ✓  | ✓   |   |
| <b>CVP9325</b>    |   | ✓   |   | ✓   |   | ✓   |  | ✓   | ✓  | ✓   | ✓   |
| <b>CBP6325</b>    |   | ✓   |   | ✓   |   | ✓   |  | ✓   | ✓  | ✓   | ✓   |
| <b>AIR3525</b>    |   |   |   |   | ✓   | ✓   |  |   | ✓  | ✓   |   |
| <b>AIR8025</b>   |   |   |   |   |   | ✓   |  |   | ✓  | ✓   |   |
| <b>CVP9316</b>  |   |   | ✓   | ✓   | ✓   | ✓   | ✓  | ✓   | ✓  | ✓   |   |
| <b>CVP9329</b>  |   |   | ✓   | ✓   | ✓   | ✓   | ✓  | ✓   | ✓  | ✓   |   |

# BRACKET MATRIX

## HIGH SPEED DOMES - (PTZ)

|  | <br><b>CP-HSDB2-WM</b><br>Wall Bracket | <br><b>CP-HSDB210-AHD-WM</b><br>Wall Mount | <br><b>CP-HSDB2-JB</b><br>Junction Box | <br><b>CP-HSDB2-PM</b><br>Pendant Mount | <br><b>CP-HSDB210-AHD-PM</b><br>Pendant Mount | <br><b>CP-HSDB2-SN</b><br>Swan Neck | <br><b>CP-HSDB2-CM</b><br>Corner Mount | <br><b>CP-HSDB2-P</b><br>Pole Mount |
|--|---|---|---|--|---|--|---|--|
| <br><b>CP-HSD210</b>  |   | ✓   |   |  | ✓   |  |   |  |
| <br><b>CP-HSD220</b><br><b>CP-HSD230</b><br><b>CP-HSD233</b> | ✓   |   | ✓   | ✓  |   | ✓  | ✓   | ✓  |

# RECORDING

## Analogue high definition

UP TO  
5MP

HYBRID

UP TO  
4K Video  
Output

Spot  
Monitors

ALARMS



Our range of DVRs offer the greatest level of AHD image clarity as all models support up to 5MP AHD. All models now come with hybrid support to allow the connection of both AHD and IP cameras; like the NVR range, Concept Pro DVRs are split into 3 different tiers of specification, Lite, Professional and Elite.

- Lite, professional and elite
- Video analytics
- Up to 16 channels
- Up to 5mp support @20FPS analogue supported
- Hybrid - AHD, TVI, SD analogue and IP compatible
- Up to 4K video output
- Secure P2P networking and Sequirinet
- IP Hybrid Support
- WD Purple surveillance HDD's inside all recorders
- Up to 50TB of storage
- Remote viewing through internet browser, iOS and Android devices
- Up to 18 alarm inputs
- Remote-monitoring ready - Immix / Sentinel
- Two way audio
- Dedicated mobile app with push notifications
- Arm and disarm
- iPims FREE high quality video management software



# RECORDING

## Ultra high definition

4K

ONVIF

POE

ALARMS

H.265


 WD Purple


Our range of Ultra High Definition NVRs support up to 8MP resolution across all models and come with a host of intelligent storage compression solutions that provide detailed clear images when required, whilst saving money on storage requirements. Split into 3 different tiers of specification, Lite, Professional and Elite, there's a Concept Pro recorder to suit any budget.

- Lite, Professional and Elite
- Video analytics
- Deep Learning video analytics
- Up to 16 channels
- Real time recording at 8mp 4K UHD resolution
- 4K video output
- H.265
- Secure P2P networking and Securinet
- Smart Storage Compression (SSC)
- WD Purple surveillance HDD's inside all recorders
- Remote viewing through internet browser, iOS and Android devices
- Up to 50TB of storage
- Up to 16 physical alarm inputs
- Remote-monitoring ready - Immix / Sentinel
- Two way audio
- Dedicated mobile app with push notifications
- Arm and disarm
- iPims FREE high quality video management software

# VXH5AHD Range

## COMPARISON CHART



| Level                                       | LITE       |            |             | PROFESSIONAL |           |            | ELITE       |
|---|------------|------------|-------------|--------------|-----------|------------|-------------|
| Model                                       | VXH5AHDL-4 | VXH5AHDL-8 | VXH5AHDL-16 | VXH5AHD-4    | VXH5AHD-8 | VXH5AHD-16 | VXH5AHDE-16 |
| Channel                                     | 4          | 8          | 16          | 4            | 8         | 16         | 16          |
| Video analytics (with compatible IP Camera) | •          | •          | •           | •            | •         | •          | •           |
| iPIMS compatibility                         | •          | •          | •           | •            | •         | •          | •           |
| Sequirinet P2P connectivity                 | •          | •          | •           | •            | •         | •          | •           |
| Concept Pro Viewer mobile app compatibility | •          | •          | •           | •            | •         | •          | •           |
| Remote monitoring                           | •          | •          | •           | •            | •         | •          | •           |
| Concept Pro intuitive user interface        | •          | •          | •           | •            | •         | •          | •           |
| Free DVRLINK dynamic DNS service            | •          | •          | •           | •            | •         | •          | •           |
| E-mail/Dual SMTP                            | •          | •          | •           | •            | •         | •          | •           |
| Two way audio                               | •          | •          | •           | •            | •         | •          | •           |
| Coaxitron support                           | •          | •          | •           | •            | •         | •          | •           |
| RS-485 keyboard support                     | •          | •          | •           | •            | •         | •          | •           |
| RS-232 point of sale support                |            |            |             |              |           |            | •           |
| e-SATA external storage support             |            |            |             |              |           |            | •           |
| Rack mount capability                       |            | •          | •           |              | •         | •          | •           |
| Fanless design                              | •          |            |             | •            |           |            |             |
| Dual monitor support                        |            |            |             | •            | •         | •          | •           |
| 1080p display resolution support            | •          | •          | •           | •            | •         | •          | •           |
| 1440p QHD display resolution support        |            |            |             | •            | •         | •          | •           |
| 2160p UHD display resolution support        |            |            |             | •            | •         | •          |             |
| Camera loop through                         |            |            |             |              |           |            | •           |
| 5MP AHD/TVI camera support                  | •          | •          | •           | •            | •         | •          | •           |
| 2MP IP camera hybrid support                | •          | •          | •           | •            | •         | •          | •           |
| 5MP IP camera hybrid support                |            |            |             | •            | •         | •          | •           |
| IPv4/IPv6 support                           | •          | •          | •           | •            | •         | •          | •           |
| Maximum HDD capacity                        | 10TB       | 20TB       | 20TB        | 10TB         | 20TB      | 20TB       | 50TB        |
| Spot out                                    | x1         | x1         | x1          | x1           | x1        | x1         | x2          |
| Alarm inputs/outputs                        | 2/1        | 2/1        | 2/1         | 4/1          | 8/1       | 16/1       | 16/8        |
| Alarm relays                                |            |            |             |              |           |            | 4/8         |
| Warranty                                    | 3 YEAR     | 3 YEAR     | 3 YEAR      | 3 YEAR       | 3 YEAR    | 3 YEAR     | 3 YEAR      |

# VUHDIP Range

## COMPARISON CHART



| Level                                       | LITE      |           |            | PROFESSIONAL |          |           | ELITE       |
|---|-----------|-----------|------------|--------------|----------|-----------|-------------|
| Model                                       | VUHDIPL-4 | VUHDIPL-8 | VUHDIPL-16 | VUHDIP-4     | VUHDIP-8 | VUHDIP-16 | VUHDIP-16V2 |
| Channels                                    | 4         | 8         | 16         | 4            | 8        | 16        | 16          |
| Video analytics                             | ●         | ●         | ●          | ●            | ●        | ●         | ●           |
| Built-in Deep Learning                      |           |           |            | ○            | ○        | ○         | ○           |
| Deep Learning camera integration            | ●         | ●         | ●          | ●            | ●        | ●         | ●           |
| Deep Learning PLUS integration              |           |           |            | ●            | ●        | ●         |             |
| iPIMS compatibility                         | ●         | ●         | ●          | ●            | ●        | ●         | ●           |
| Sequirinet P2P connectivity                 | ●         | ●         | ●          | ●            | ●        | ●         | ●           |
| Concept Pro Viewer mobile app compatibility | ●         | ●         | ●          | ●            | ●        | ●         | ●           |
| Remote monitoring                           | ●         | ●         | ●          | ●            | ●        | ●         | ●           |
| Concept Pro intuitive user interface        | ●         | ●         | ●          | ●            | ●        | ●         | ●           |
| Free DVRLINK dynamic DNS service            | ●         | ●         | ●          | ●            | ●        | ●         | ●           |
| E-mail/Dual SMTP                            | ●         | ●         | ●          | ●            | ●        | ●         | ●           |
| Two way audio                               |           |           |            | ●            | ●        | ●         | ●           |
| Alarm arm/disarm switch support             | ●         | ●         | ●          | ●            | ●        | ●         | ●           |
| RS-485 keyboard support                     | ●         | ●         | ●          | ●            | ●        | ●         | ●           |
| RS-232 point of sale support                |           |           |            |              |          |           | ●           |
| e-SATA external storage support             |           |           |            |              |          |           | ●           |
| Rack mount capability                       |           | ●         | ●          |              | ●        | ●         | ●           |
| Fanless design                              | ●         |           |            | ●            |          |           |             |
| 2160p UHD display resolution support        | ●         | ●         | ●          | ●            | ●        | ●         | ●           |
| Real-time recording at 8MP (4K UHD)         | ●         | ●         | ●          | ●            | ●        | ●         | ●           |
| Power over ethernet                         | x4        | x8        | x8 + x8    | x4           | x8       | x8 + x8   | x8 + x8     |
| H.265 Video codec support                   | ●         | ●         | ●          | ●            | ●        | ●         | ●           |
| Smart storage compression support           | ●         | ●         | ●          | ●            | ●        | ●         | ●           |
| IPv4/IPv6 support                           | ●         | ●         | ●          | ●            | ●        | ●         |             |
| Maximum HDD capacity                        | 10TB      | 20TB      | 20TB       | 10TB         | 20TB     | 20TB      | 50TB        |
| Spot out                                    |           |           | x1         |              |          | x1        |             |
| Alarm inputs/outputs                        | 2/1       | 2/1       | 2/1        | x4/x1        | 8/1      | 16/1      | 2/1         |
| Virtual alarm inputs/outputs                | 4/4       | 8/8       | 16/16      | 4/4          | 8/8      | 16/16     | 16/16       |
| Warranty                                    | 3 YEAR    | 3 YEAR    | 3 YEAR     | 3 YEAR       | 3 YEAR   | 3 YEAR    | 3 YEAR      |

● Standard  
○ Deep Learning - Licence required

# Physical dimensions & order codes

## LITE ORDER CODES

## PROFESSIONAL ORDER CODES



### AHD 4 CHANNEL

- VXH5AHDL-4/1000 | 1Tb HDD
- VXH5AHDL-4/2000 | 2Tb HDD
- VXH5AHDL-4/3000 | 3Tb HDD
- VXH5AHDL-4/4000 | 4Tb HDD
- VXH5AHDL-4/6000 | 6Tb HDD
- VXH5AHDL-4/8000 | 8Tb HDD
- VXH5AHDL-4/10000 | 10Tb HDD



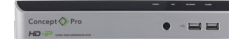
### HD-IP 4 CHANNEL

- VUHDIPL-4/1000 | 1Tb HDD
- VUHDIPL-4/2000 | 2Tb HDD
- VUHDIPL-4/3000 | 3Tb HDD
- VUHDIPL-4/4000 | 4Tb HDD
- VUHDIPL-4/6000 | 6Tb HDD
- VUHDIPL-4/8000 | 8Tb HDD



### AHD 4 CHANNEL

- VXH5AHD-4/1000 | 1Tb HDD
- VXH5AHD-4/2000 | 2Tb HDD
- VXH5AHD-4/3000 | 3Tb HDD
- VXH5AHD-4/4000 | 4Tb HDD
- VXH5AHD-4/6000 | 6Tb HDD
- VXH5AHD-4/8000 | 8Tb HDD
- VXH5AHD-4/10000 | 10Tb HDD



### HD-IP 4 CHANNEL

- VUHDIP-4/1000 | 1Tb HDD
- VUHDIP-4/2000 | 2Tb HDD
- VUHDIP-4/3000 | 3Tb HDD
- VUHDIP-4/4000 | 4Tb HDD
- VUHDIP-4/6000 | 6Tb HDD
- VUHDIP-4/8000 | 8Tb HDD
- VUHDIP-4/10000 | 10Tb HDD



### AHD 8 CHANNEL

- VXH5AHDL-8/1000 | 1Tb HDD
- VXH5AHDL-8/2000 | 2Tb HDD
- VXH5AHDL-8/3000 | 3Tb HDD
- VXH5AHDL-8/4000 | 4Tb HDD
- VXH5AHDL-8/6000 | 6Tb HDD
- VXH5AHDL-8/8000 | 8Tb HDD
- VXH5AHDL-8/12000 | 12Tb HDD
- VXH5AHDL-8/16000 | 16Tb HDD
- VXH5AHDL-8/20000 | 20Tb HDD



### HD-IP 8 CHANNEL

- VUHDIPL-8/1000 | 1Tb HDD
- VUHDIPL-8/2000 | 2Tb HDD
- VUHDIPL-8/3000 | 3Tb HDD
- VUHDIPL-8/4000 | 4Tb HDD
- VUHDIPL-8/6000 | 6Tb HDD
- VUHDIPL-8/8000 | 8Tb HDD
- VUHDIPL-8/12000 | 12Tb HDD
- VUHDIPL-8/16000 | 16Tb HDD



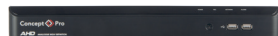
### AHD 8 CHANNEL

- VXH5AHD-8/1000 | 1Tb HDD
- VXH5AHD-8/2000 | 2Tb HDD
- VXH5AHD-8/3000 | 3Tb HDD
- VXH5AHD-8/4000 | 4Tb HDD
- VXH5AHD-8/6000 | 6Tb HDD
- VXH5AHD-8/8000 | 8Tb HDD
- VXH5AHD-8/12000 | 10Tb HDD
- VXH5AHD-8/16000 | 16Tb HDD
- VXH5AHD-8/20000 | 20Tb HDD



### HD-IP 8 CHANNEL

- VUHDIP-8/1000 | 1Tb HDD
- VUHDIP-8/2000 | 2Tb HDD
- VUHDIP-8/3000 | 3Tb HDD
- VUHDIP-8/4000 | 4Tb HDD
- VUHDIP-8/6000 | 6Tb HDD
- VUHDIP-8/8000 | 8Tb HDD
- VUHDIP-8/10000 | 10Tb HDD
- VUHDIP-8/12000 | 12Tb HDD
- VUHDIP-8/16000 | 16Tb HDD
- VUHDIP-8/20000 | 20Tb HDD



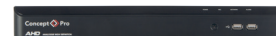
### AHD 16 CHANNEL

- VXH5AHDL-16/1000 | 1Tb HDD
- VXH5AHDL-16/2000 | 2Tb HDD
- VXH5AHDL-16/3000 | 3Tb HDD
- VXH5AHDL-16/4000 | 4Tb HDD
- VXH5AHDL-16/6000 | 6Tb HDD
- VXH5AHDL-16/8000 | 8Tb HDD
- VXH5AHDL-16/12000 | 12Tb HDD
- VXH5AHDL-16/16000 | 16Tb HDD
- VXH5AHDL-16/20000 | 20Tb HDD



### HD-IP 16 CHANNEL

- VUHDIPL-16/1000 | 1Tb HDD
- VUHDIPL-16/2000 | 2Tb HDD
- VUHDIPL-16/3000 | 3Tb HDD
- VUHDIPL-16/4000 | 4Tb HDD
- VUHDIPL-16/6000 | 6Tb HDD
- VUHDIPL-16/8000 | 8Tb HDD
- VUHDIPL-16/12000 | 12Tb HDD
- VUHDIPL-16/16000 | 16Tb HDD



### AHD 16 CHANNEL

- VXH5AHD-16/1000 | 1Tb HDD
- VXH5AHD-16/2000 | 2Tb HDD
- VXH5AHD-16/3000 | 3Tb HDD
- VXH5AHD-16/4000 | 4Tb HDD
- VXH5AHD-16/6000 | 6Tb HDD
- VXH5AHD-16/8000 | 8Tb HDD
- VXH5AHD-16/12000 | 12Tb HDD
- VXH5AHD-16/16000 | 16Tb HDD
- VXH5AHD-16/20000 | 20Tb HDD



### HD-IP 16 CHANNEL

- VUHDIP-16/1000 | 1Tb HDD
- VUHDIP-16/2000 | 2Tb HDD
- VUHDIP-16/3000 | 3Tb HDD
- VUHDIP-16/4000 | 4Tb HDD
- VUHDIP-16/6000 | 6Tb HDD
- VUHDIP-16/8000 | 8Tb HDD
- VUHDIP-16/10000 | 10Tb HDD
- VUHDIP-16/12000 | 12Tb HDD
- VUHDIP-16/16000 | 16Tb HDD
- VUHDIP-16/20000 | 20Tb HDD

● Video Analytics ready  
● Deep Learning - Licence required

For enquiries about Deep Learning video analytics licence activation, please call us on 01924 528000

## ELITE ORDER CODES



### HD-IP 16 CHANNEL

|                      |          |
|----------------------|----------|
| ● VUHDIPE-16V2/3000  | 3Tb HDD  |
| ● VUHDIPE-16V2/6000  | 6Tb HDD  |
| ● VUHDIPE-16V2/9000  | 9Tb HDD  |
| ● VUHDIPE-16V2/12000 | 12Tb HDD |
| ● VUHDIPE-16V2/15000 | 15Tb HDD |
| ● VUHDIPE-16V2/20000 | 20Tb HDD |
| ● VUHDIPE-16V2/24000 | 24Tb HDD |
| ● VUHDIPE-16V2/30000 | 30Tb HDD |
| ● VUHDIPE-16V2/40000 | 40Tb HDD |
| ● VUHDIPE-16V2/50000 | 50Tb HDD |



### AHD 16 CHANNEL

|                     |          |
|---------------------|----------|
| ● VXH5AHDE-16/1000  | 1Tb HDD  |
| ● VXH5AHDE-16/3000  | 2Tb HDD  |
| ● VXH5AHDE-16/4000  | 4Tb HDD  |
| ● VXH5AHDE-16/6000  | 6Tb HDD  |
| ● VXH5AHDE-16/8000  | 8Tb HDD  |
| ● VXH5AHDE-16/9000  | 9Tb HDD  |
| ● VXH5AHDE-16/12000 | 12Tb HDD |
| ● VXH5AHDE-16/15000 | 15Tb HDD |
| ● VXH5AHDE-16/18000 | 18Tb HDD |
| ● VXH5AHDE-16/24000 | 24Tb HDD |
| ● VXH5AHDE-16/30000 | 30Tb HDD |
| ● VXH5AHDE-16/40000 | 40Tb HDD |

## 8 CHANNEL POE EXTENDER INCLUDED FOR ALL 16 CHANNEL HD-IP RECORDERS

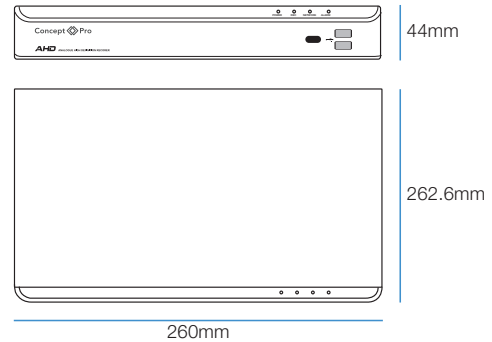


### Extended cable distance with supplied 8 channel hub

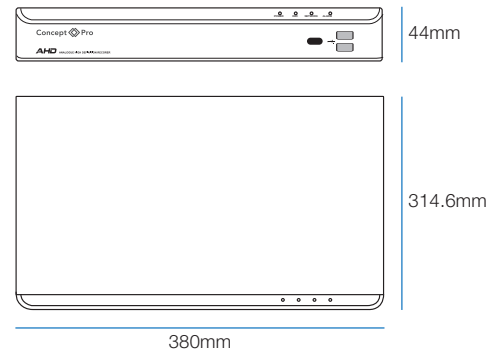
The VUHDIPE-16V2 channel splits its channel inputs between the back of the recorder and a separate PoE unit, allowing installers the convenience of being able to power eight of the sixteen cameras up to 200 metres away from the recorder using only one additional power source, whilst connecting the nearest cameras directly to the NVR.

(Dimensions: 340(W) x 141(D) x 35(H) mm)

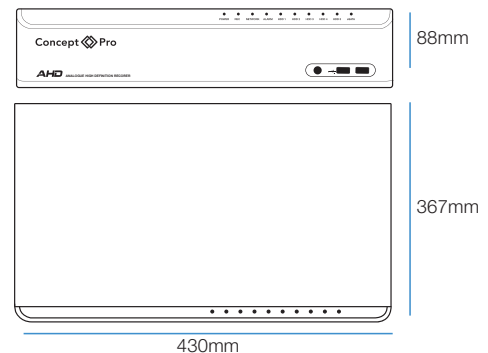
## LITE & PROFESSIONAL 4 CHANNEL DIMENSIONS



## LITE & PROFESSIONAL 8 & 16 CHANNEL DIMENSIONS



## ELITE 8 & 16 CHANNEL DIMENSIONS



# CONCEPT PRO MONITORS

We stock a wide range of monitors From 5" to 43" multiple input types all backed by a 2 year warranty



## VLED15P/17P/19P

- Plastic Housing
- High Resolution 1024 x 768
- Multiple Video Input Types
- HDMI , VGA & BNC Input
- 4:3 Aspect Ratio



## VLED19PD/22PD/32PD

- LED Backlit Screen
- Plastic Housing
- High Definition (HD) Resolution
- HDMI , VGA & BNC Input
- 16:9 Aspect Ratio



## VLED17MB/19MC/22MC/32MC

- Robust Metal Housing
- Protective acrylic screen cover
- 2 x HDMI Inputs
- USB & SD Media player Card Input
- 1920 X 1080 LED Panel
- Wide Viewing Angles



## VLED10PVM/22PVM/32PVM

- Ideal for retail environments
- Dual 1080p cameras (excluding 10")
- Metal Casing
- Protected screen
- Various mounting options
- SD Card
- Media Player

**Whatever the situation, Videcon have the monitor to suit your needs.**

Contact the Videcon team on **01924 528000** or visit **www.videcon.co.uk**

# CONCEPT PRO MONITORS

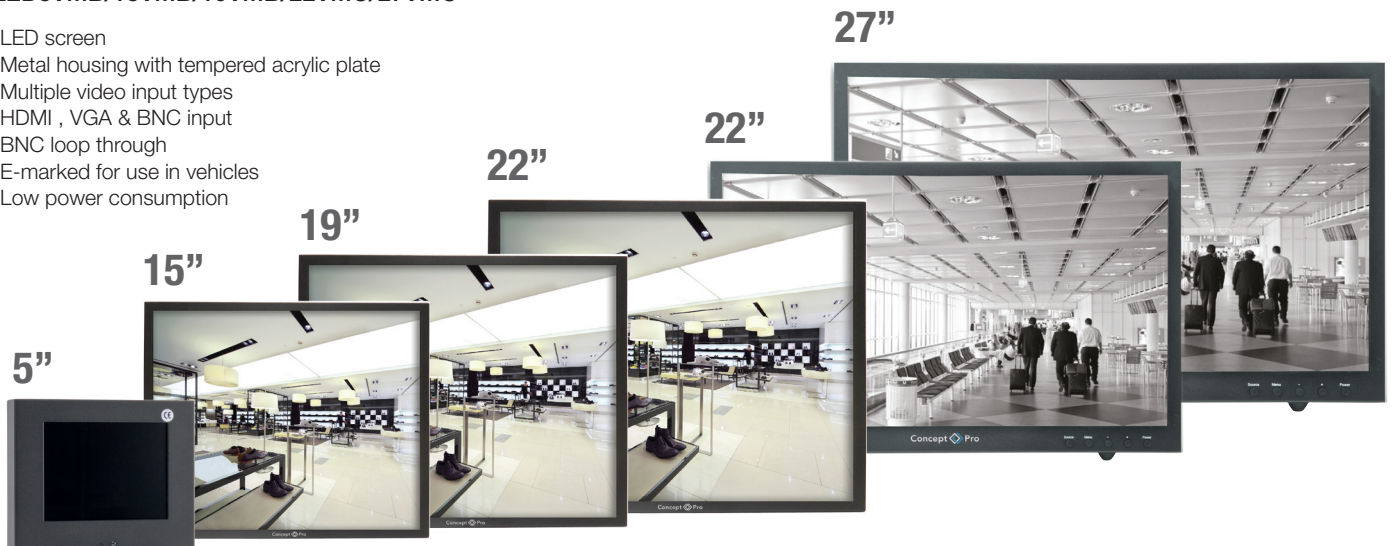
## VLED28UHD-V2/VLED43UHD/VLED50UHD



- 28", 43" or 50" LED backlit 4K screen
- Resolution 3840 x 2160
- 300 or 350 or 400CD/M<sup>2</sup>
- 1,000:1 4,000:1 or 5,000:1 contrast ratio
- 1.073G colour
- Built-in 3D comb filter & de-interlacing
- Picture in picture

## VLED5VMB/15VMB/19VMB/22VMC/27VMC

- LED screen
- Metal housing with tempered acrylic plate
- Multiple video input types
- HDMI , VGA & BNC input
- BNC loop through
- E-marked for use in vehicles
- Low power consumption



# INTRUDER



**Videcon is proud to be able to supply a wide range of high quality third party products and is committed to working with only the highest calibre of suppliers to give our customers everything that they could need for their security related installations.**

We understand that you can't always be available 24 hours a day to monitor your CCTV, so we provide an extensive range of products that allow trained staff at monitoring companies to keep your premises safe.

Your site will be fully covered, giving you peace of mind that any events will trigger an alarm and be viewed immediately to ascertain if the trigger is to be investigated, or if there is a genuine event that requires police presence.

Intruder detection at your site will also act as an efficient deterrent to most criminals, keeping your site safer. We are always available to advise you on the most suitable equipment for your needs.

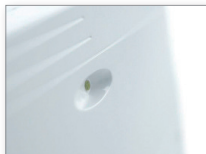
Keeping your site safe and secure is our top priority and we have an ever expanding range of intruder detection solutions in stock.

## VIDECON. FOR ALL YOUR FIRE AND SECURITY NEEDS.

**WHATEVER INTRUDER DETECTION EQUIPMENT OR ADVICE YOU NEED, TALK TO US TODAY.**

Contact the Videcon team on **01924 528000**  
or visit **[www.videcon.co.uk](http://www.videcon.co.uk)**

Control Panels



Keypads



Expanders



Communicators



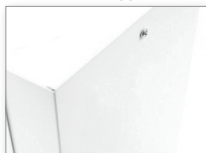
Fire Detectors



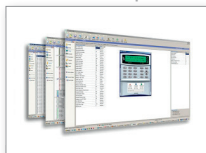
Wireless Systems



Power Supplies



Software & Peripherals



Motion Detectors



Perimeter Detectors



Wireless Peripherals



Wireless Kits





# DETECTION



## Wired Detectors

An extensive range of wired external detection solutions to suit all sector requirements.

GJD's security solutions rapidly identify genuine alerts, whilst optimising the call-out time of responders, making GJD products truly valuable assets to both people and properties worldwide.

### Did you know?

GJD's D-TECT IP provides direct integration with Concept Pro

GJD's D-TECT IP range of motion detectors seamlessly integrate with the Concept Pro VHDIPV2 recorders. The result of this is fast and efficient installation with low maintenance costs.

#### Key Features of the GJD D-TECT IP Range:

- POE and IP communication
- Web browser interface
- Advanced signal processing, quad pyro and optical systems
- Robust IP65 zinc metal housing
- Ability to monitor large detection areas
- Exceptional resistance to false alarms
- Variable mounting heights: 1.5m - 6m
- Pet immunity at 1.5m
- Integral masking curtains to reduce field of view angle
- Covert sensor module so the detector orientation is not obvious
- BS418 compliant



## DESIGNERS & MANUFACTURERS OF PIR DETECTION SYSTEMS, CONTROLS AND ASSOCIATED PRODUCTS.

Luminite have extensive experience and expertise in the security and home automation markets and constantly strive to bring new innovative products to the security industry.

PIRs are still the most cost-effective, early detection tools for intruder alarm and event-driven CCTV systems. We have focused on making our PIRs the most reliable and flexible available and even make wireless systems for our competitors.

One of the most popular range of detectors is the Genesis collection which comprise both wireless and hard wired detectors. The Genesis system incorporates transmitters, receivers, IP receivers and repeaters.



## Multi-Layered Intrusion Detection

For perimeter, site, people and asset protection.

Optex Group, founded in 1979, are a leading global security solutions manufacturer that never stop inventing to create a safe, secure, and comfortable society. Offering a range of internal and external detection equipment, access control equipment and a range of compatible accessories, Videcon are delighted to offer a wide range of Optex products on our website.

Delivering security and entrance protection, we have partnered with them to further increase our range of quality third party products with a trusted heritage.

Visit [www.videcon.co.uk](http://www.videcon.co.uk) to browse the full Optex product range available. Detection and protection at it's best.

# ACCESSORIES

## EMERGENCY LIGHTING



**EXIT3MLED**

LED maintained emergency exit sign



**BGU-R**

MCP Anti Tamper Indoor Call Point



**T5EM3M**

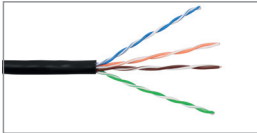
8W T5 3hr Maintained Emergency Bulkhead



**LED TWINSPOt**

20w 3Hr Non Maintained Spot Unit

## CAT 5/6 CABLE



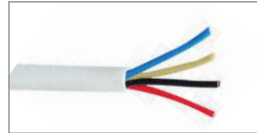
- CAT5-305**  
CAT5 Cable 305m - Purple
- CAT5-305W**  
CAT5 Cable 305m - White
- CAT5-305 DUCT GRADE**  
CAT5 Cable 305m  
Duct Grade Black
- CAT5-100P**  
CAT5 Cable 100m  
2-Core Power
- CAT6-305**  
CAT6 Cable 305m - Green
- CAT6-305 DUCT GRADE**  
CAT6 Cable 305m  
Duct Grade Black

## COAX CABLE



- RG59K-100**  
RG59 coaxial cable - 100m
- RG59K-250**  
RG59 coaxial cable - 250m
- RG59K-500**  
RG59 coaxial cable - 500m
- RG59K-500**  
RG59 coaxial cable - 500m
- RG59K-2C100**  
RG59 2 x 0.5mm composite -  
100m
- RG59K-2C100**  
RG59 2 x 0.5mm composite -  
250m

## ALARM CABLE



- CABLE/A6**  
6 Core Alarm cable, 100m (PVC)
- CABLE/A6**  
6 Core Alarm cable, 100m (PVC)
- CABLE/A8**  
8 Core Alarm cable, 100m (PVC)
- CABLE/A8/200**  
8 Core Alarm cable 200m (PVC)
- CABLE/A12**  
Alarm cable 100m (PVC)
- CABLE/A12/200**  
12 Core composite 100m
- CABLE/A12/200**  
8 Core Alarm cable 200m (PVC)

**DUCT GRADE & SCREENED  
OPTIONS AVAILABLE**

## FIRE CABLE



- CABLE/FP200-R**
- 00/500V
- BS7629-1
- BS EN 50200 PH30, PH60  
and PH120
- BS EN 50200 Annex E
- Gold
- Use for BS5839-1, 6, 8 & 9 'standard'  
application circuits
- Use for BS5266 'standard' circuits
- BASE Approved
- LPCB Approved
- London underground approved LU  
1-085A (Previously 'Section 12')
- Low smoke
- Zero halogen
- Flame retardant

## CONNECTORS



- CG59CP/100**  
Bag of 100 RG59 crimp plugs
- CG59CP**  
RG59 crimp plug
- CG59CJ**  
RG59 crimp jack connector

- CG59MP**  
RG59 mini crimp plug
- CG59MP/100**  
100 bag RG59 mini crimp plug
- CG59RC**  
RG59 right angled crimp plug
- CG59SP**  
RG59 screw-on plug
- CG59T**  
RG59 'T' connector  
2 connector (male)  
1 plug (female)

- CG59PA**  
RG59 plug to phono socket
- PCG59A**  
Phono plug to RG59 connector
- PHONO**  
Phono Plug - Suitable for soldering  
small screened cable
- CG59SC**  
RG59 straight connector
- CG59TB**  
Terminal to RG59 BNC

- CG59TPS**  
Terminal to Power Socket
- CG59TBJ**  
Terminal to Power Jack
- RJ45CP**  
RJ45 crimp plugs for CAT5 -  
Pack 100
- RJ45CP/CAT6/100**  
RJ45 crimp plugs for CAT6 -  
Pack 100

# ACCESSORIES

## BALUNS



**VA311PT-AHD**

Single Channel Passive Screw Terminal Balun with BNC Cable



**VA311ST-AHD**

Single Channel Passive Screw Terminal Balun



**VA311SC-AHD**

Single Channel Passive Self Crimp Balun

## DUAL LINE DRIVER



**VA6500**

This VA6500 supports AHD 4in1 and up to 8MP resolution and provides power through the coax cable up to 500m and is fully compatible with coax telemetry

## SWITCHES



**VA-SW4POE-IP VA-SW8POE-IP VA-SW16POE-IP**

4, 8 & 16 Channel POE Switches

The VA-SW4/8/16POE-IP are 4, 8 and 16 channel IP PoE+ switches. Each switch provides PoE+ ports capable of outputting 30W and the 8 and 16 channel provide gigabit uplink and downlink ports.

The ports can automatically detect and supply power for IEEE802.3af and IEEE802.3at compliant powered devices.

The 4/8 port switches are small form factor metal-shell devices that are useful for offices and homes, providing fast packet forwarding ability and abundant back-plane bandwidth. While the 16 port switch is 19" 1U in size, this is ideal for commercial applications where server racks are in use.

### KEY FEATURES

- Fanless design (4&8)
- Max 30W output per port capability
- Gigabit uplink and downlink port (8 & 16)
- No configuration required
- Automatically detects and supplies power
- Up to 65W(4) 135W(8) & 250W(16) PoE power
- Compatible with IP cameras & all AHD cameras

## HDMI EXTENDERS



HDMI UTP Extenders

The HDMIEXT-60M is an HDMI over ethernet cable extender. This allows the user to view and control a CCTV recording device at up to 60m away whilst maintaining a 1080p video feed. The product consists of a transmitter and receiver; up to 60m CAT6 can connect the devices with a 5m HDMI at either end. This is perfect for CCTV monitoring where a local recorder control is required but local access is not possible. This can also be used in home theatres, exhibitions or multimedia function rooms. By using a HDMI over ethernet extender, it reduces transmission failures, colour loss, video loss and other issues associated with long distance HDMI transmission.

The HDMIEXT-150M model extends the control up to 150m away with all the functionality of the 60m version. Up to 150m CAT6 can connect the devices with 5m HDMI at either end.

### KEY FEATURES

- Transmits HDMI video @1080p up to 60m or 150m
- Compact design for discreet & simple installation
- EQ auto detects highest supported resolution
- Remote control up to 60m or 150m

## VLEDTM-TS7

All-in-One Multi-function CCTV Tester

|                 |            |                  |                  |                   |                 |                           |
|-----------------|------------|------------------|------------------|-------------------|-----------------|---------------------------|
| 7" Touch Screen | HDMI Input | Connect to Wi-Fi | UTP Cable Tester | RS485 & Coaxitron | DC & POE output | IP & Analogue Camera Test |
|-----------------|------------|------------------|------------------|-------------------|-----------------|---------------------------|



### KEY FEATURES

- 7 inch retina touch screen, 1920x1200 resolution
- H.265/H.264 video display via main stream
- Generate WiFi hotspot from LAN connection
- HDMI Input @ 1080p for easier installs
- Supports IP camera search and testing functions
- Supports & displays AHD, TVI, CVI & analogue cameras.
- Up to 5MP AHD, 8MP TVI & 8MP CVI
- UTP cable tester



**YUASA**

**YUASA Batteries are now available for you to buy online at [www.vedicon.co.uk](http://www.vedicon.co.uk)**

NP Valve Regulated Lead-Acid Industrial Batteries. Guaranteed Capacity. Yuasa Quality Assurance. VDS Approved. 6 & 12 Volt types

**WHATEVER ACCESSORIES YOU NEED, TALK TO US TODAY.**  
Contact the Videcon team on **01924 528000**  
or visit **[www.vedicon.co.uk](http://www.vedicon.co.uk)**



## BOOK A DEMONSTRATION TODAY.

We can come to you anytime, anywhere, ensuring the process for you is as smooth and as stress free as possible. Our experienced group of nine field sales executives give Videcon a full nationwide coverage to deliver the best service to you. Our field sales team have extensive knowledge of our entire product range and they will be happy to provide a full demonstration to both you and your customers, at a time and place convenient to you, at no extra cost.

Alternatively, join us at one of our dedicated demonstration facilities based in our 82,000 sq. ft. headquarters in West Yorkshire or our Southern Branch in Welwyn Garden City.

Fitted with our entire range of Concept Pro products, the demonstration facilities are the perfect place to see our products conveniently under one roof.

### HEAD OFFICE

Videcon Ltd  
Unit 1 Concept Bus. Park  
Smithies Lane, Heckmondwike  
West Yorkshire. WF16 0PN

### SOUTHERN BRANCH

Unit 5 Bridgegate Centre  
Martinfield  
Welwyn Garden City  
AL7 1JG

## TAILORED TRAINING SOLUTIONS

### Videcon provides a comprehensive training service for its customers.

We provide bespoke training and support sessions for CCTV & security professionals on any products featured in the product lineup. These sessions are available at a location convenient to you, or at either of our custom-built product demonstration facilities, with full and half-day sessions available, we have options available to suit any scenario.

### How can I book a bespoke technical training day?

Please e-mail all enquiries to [training@videcon.co.uk](mailto:training@videcon.co.uk) or call 01924 528006

### What is the minimum number of attendees required?

5 attendees are required as a minimum for a bespoke technical training day

### What is the maximum number of attendees?

To ensure we cover all the technical questions you may have and to give you a more personalised training session, we have a 12 attendee limit to our bespoke technical training.

\*ROI and NI subject to availability

### Introduction to CCTV

- Applications of CCTV
- Camera and lenses
- CCTV transmission, switching and control systems
- Video multiplexers and digital recording
- Data protection act (1998)
- Fault finding
- Coaxial telemetry
- Twisted pair cable in CCTV
- Integrated domes
- Fibre optic transmission
- Remote monitoring of CCTV
- Free space transmission of video signals
- Network CCTV

### IP CCTV Training

- The basics of installing IP surveillance systems
- IP Networking Principles
- Switches and routers
- Alarms, IP PTZ control and audio
- IP configuration



**REGISTER NOW AT [WWW.VIDECON.CO.UK](http://WWW.VIDECON.CO.UK)**  
**PERSONALISED SECURE PRICING, GUARANTEED**



We are committed to a policy of continuous product development and reserves the right to make changes to specifications and product availability without notice. The information in this brochure can therefore be given as guidance only. Whilst we make every effort to ensure that specifications are accurate at the time of publication, you should always check with Videcon either online at [www.videcon.co.uk](http://www.videcon.co.uk) or over the phone on 01924 528000.